



Operational Reporting Web Viewer Installation and Users Guide

Table of Contents

Disclaimer	3
What is Operational Reporting Web Viewer?.....	4
Installation Requirements.....	5
Installation Instructions	6
IIS Configuration.....	8
Configuring Operational Reporting Web Viewer	9
Providing Access to the Operational Reporting Web Viewer	10
Accessing the Operational Reporting Web Viewer with the browser.....	11

Disclaimer

Direct, incidental, consequential, indirect, or punitive damages arising out of your access to, or use of, the site and articles within. Without limiting the foregoing, everything on the site is provided to you 'AS IS' WITHOUT WARRANTY OF ANY KIND, EITHER EXPRESSED OR IMPLIED, INCLUDING, BUT NOT LIMITED TO, THE IMPLIED WARRANTIES OF MERCHANTABILITY, FITNESS FOR A PARTICULAR PURPOSE, OR NON INFRINGEMENT.

"Please note that some jurisdictions may not allow the exclusion of implied warranties, so some of the above exclusions may not apply to you. Check your local laws for any restrictions or limitations regarding the exclusion of implied warranties."

What is Operational Reporting Web Viewer?

The Operational Reporting Web Viewer is a web application that is included in the installation packages with **TSM Studio Server** and **TSM Studio Operational Reporting**. The Operational Reporting Web View provides web access to view Operational Reports that have been run in the fore-mentioned applications and store in the backend database

TSM Studio Operational Reporting provides an easy way to run a set of pre-packaged reports to view the status on the most important aspects of your TSM Server. TSM Studio Operational Reporting includes.

- **Archive, Backup, Restore and Retrieve Reporting**
- **Virtual Environment Backup Reporting**
- **Database and Log Utilization and Capacity**
- **Storage Pool Utilization**
- **Administration Schedules and Status**
- **Custom Summary section**
- **Add User defined SQL to the Custom Summary**
- **Activity Log Errors**
- **Migration, Expiration and Replication Statistics**
- **Full Missed File Details**
- **DRM Status**
- **Tape Drive Usage**
- **Process and Session Load**
- **TSM Storage Used**
- **Volume Status**

TSM Studio Operational Reporting tightly integrates with Windows security to provide a robust and secure environment for managing the TSM Servers in your environment.

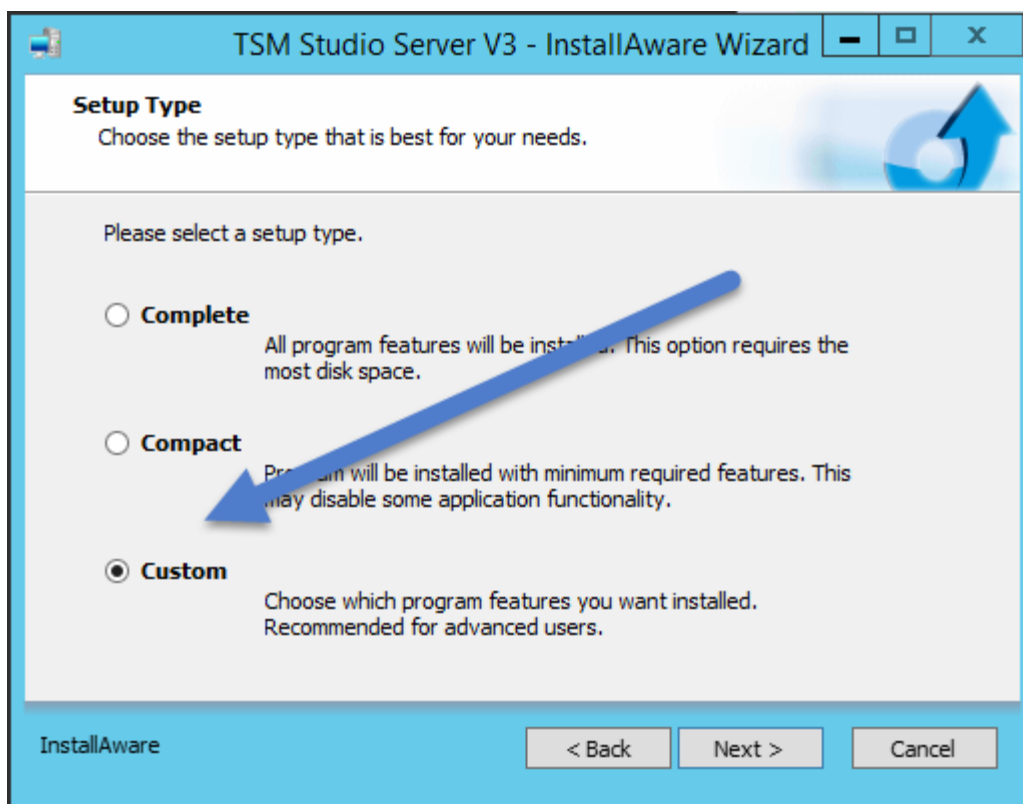
Installation Requirements

- Microsoft Windows Server 2008 and above
- IIS
- Microsoft DotNet Framework 4.5.2 and above

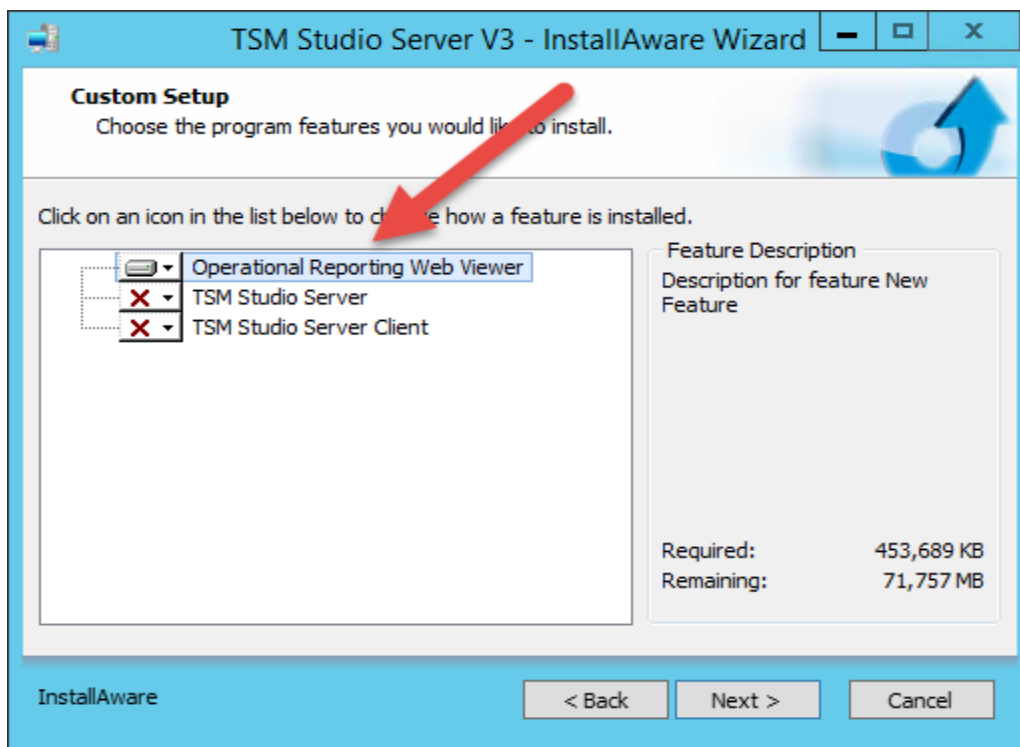
Installation Instructions

By default the Operational Reporting Web Viewer is disabled in the installation and will not be installed. The Operational Reporting Web Viewer can be installed on the same server as TSM Studio Server or TSM Studio Operational Reporting or on a remote server.

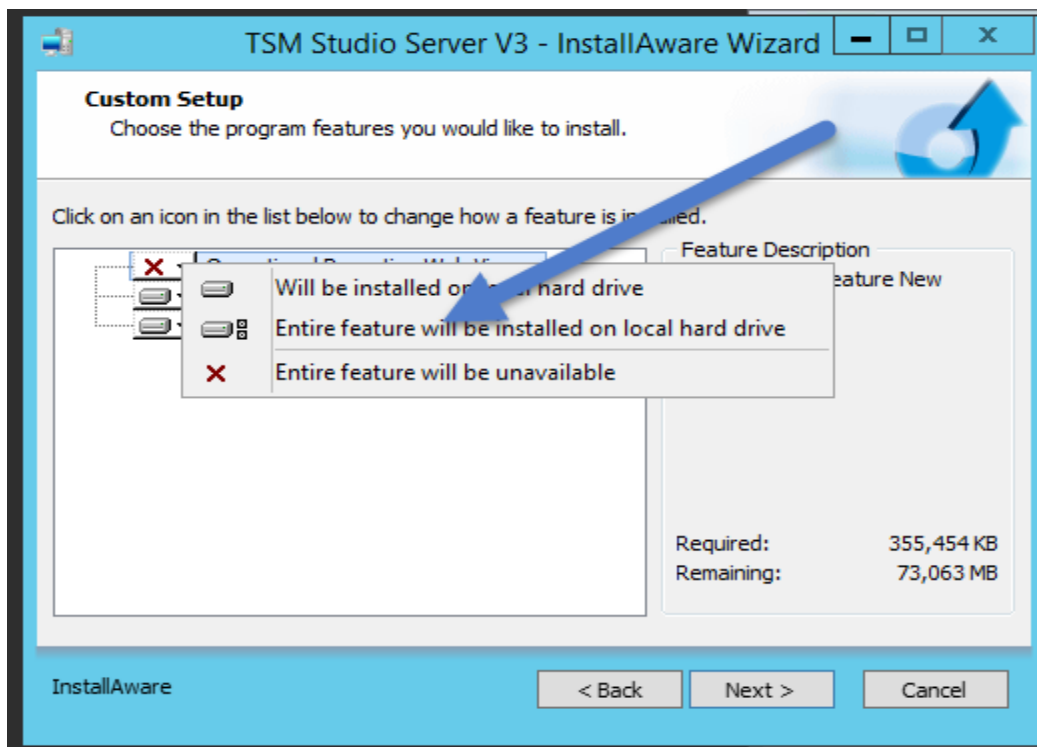
To install the Operational Reporting Web Viewer select the **“Custom”** option during installation of **TSM Studio Server** or **TSM Studio Operational Reporting** as shown here



Select **Operational Reporting Web Viewer**

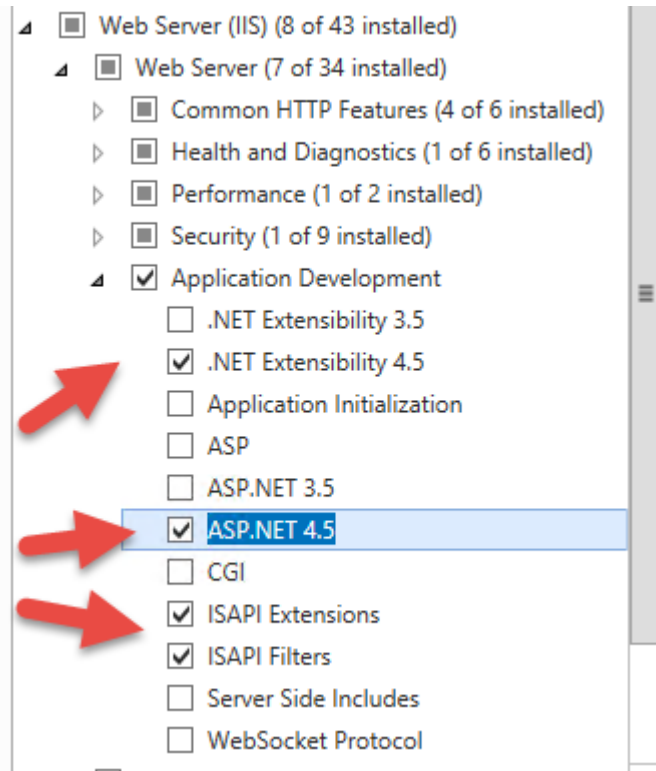


Then select “Entire feature will be installed on local hard drive”



IIS Configuration

During installation of IIS be sure to choose **“Application Development”** and select ASP.NET 4.5 (or above)

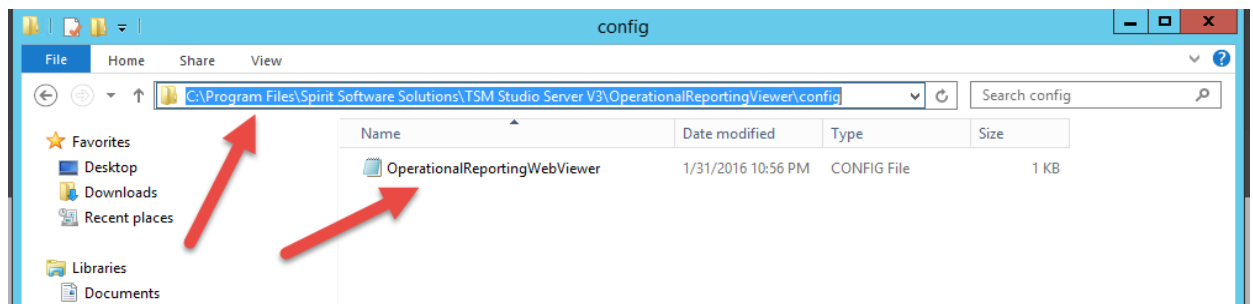


Configuring Operational Reporting Web Viewer

If the Operational Reporting Web Viewer is installed on the same server as TSM Studio Server or TSM Studio Operational Reporting and these applications are using the default ports then no configuration changes are required.

If the defaults ports have been changed or the Operational Reporting Web Viewer has been installed on a different server then the Operational Reporting Web Viewer configuration file will need to be updated to reflect this.

The configuration file can be found in the config directory under that main installation directory



The configuration file is name **“OperationalReportingWebViewer.config”** and there are two entries that may need to be modified

Server	The IP Address or DNS name of the TSM Studio Server or TSM Studio Operational Reporting Server
Port	The Port the TSM Studio Server or TSM Studio Operational Reporting Server is listening on

Show here are the defaults for TSM Studio Server

Server=localhost

Port=9997

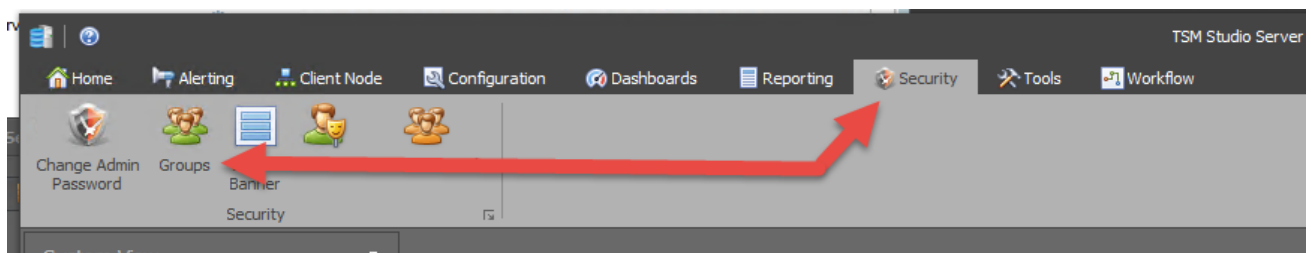
ServerName=TSM Studio Server

Providing Access to the Operational Reporting Web Viewer

Within the security system in TSM Studio Server and TSM Studio Operational Reporting there is a role named Operational Reporting Viewer. To view reports using the Operational Reporting Web View a user must have been granted access to this role.

The first step is to create a security group in TSM Studio Server or TSM Studio Operational Reporting. The security group is used to associate roles with Active Directory Groups.

Goto the Security Tab and select Groups



Add a new group

A screenshot of the 'Security Groups' configuration page in TSM Studio Server. The page has a dark grey header with the title 'Security Groups'. Below the header, there are several input fields: 'Name' with the value 'Operational Reporting View Access', 'Description' (empty), 'Roles' with a dropdown menu showing 'Operational Reporting Viewer', and 'Windows Groups' with a text area containing 'OperationalReporting'. The 'Windows Groups' section has a scrollable list area.

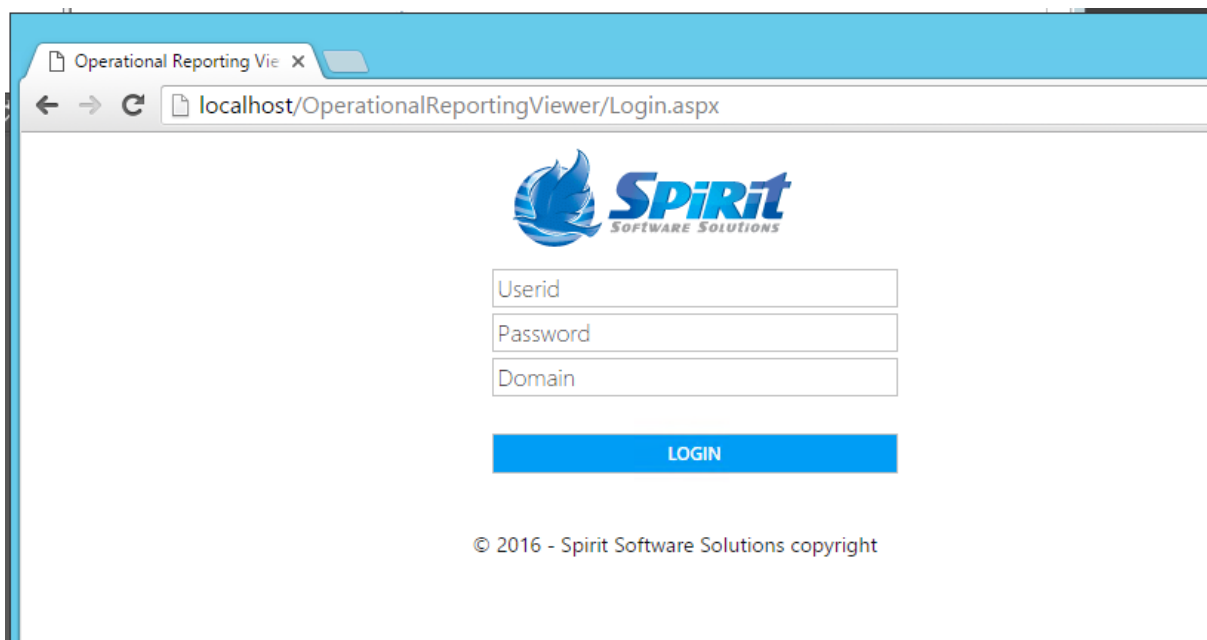
Provide a unique name for the group. Add an optional description and choose the **Operational Reporting View** Role. In the windows groups section add the Active Directory Groups that will have access to the Operational Reporting Web Viewer.

Accessing the Operational Reporting Web Viewer with the browser

To access the Operational Reporting Web Viewer open the following URL replacing {HOST} with the name of the host running IIS.

<http://{HOST}/OperationalReportingViewer>

At the logon prompt enter the userid and password of a user that has access to the Operational Reporting Viewer role and press login



The screenshot shows a web browser window with the title 'Operational Reporting Vie' and a single tab. The address bar displays 'localhost/OperationalReportingViewer/Login.aspx'. The page content features the 'SPIRiT SOFTWARE SOLUTIONS' logo at the top center. Below the logo are three input fields labeled 'Userid', 'Password', and 'Domain'. A blue 'LOGIN' button is positioned below these fields. At the bottom of the page, the copyright notice '© 2016 - Spirit Software Solutions copyright' is visible.

On the selection screen select the Date Range, TSM Servers and Operational Reporting Packages to view and press submit

Operational Reporting Viewer

Logout

Select Date Range

Period Type: Last Week

Start Date: 2/14/2016 10:07 AM

End Date: 2/21/2016 10:07 AM

TSM Servers

Spirit Software TSM Server 1, Spirit Software TSM Server 2

Operational Reporting Packages

System Default, Test, Test1

Submit

Click on the Operational Reporting URL to view the Operational Report

Operational Reporting Viewer

Logout

Url	Date Created	TSM Server Name	Package Name
Open Operational Report	2/20/2016 5:53 PM	Spirit Software TSM Server 1	Test
Open Operational Report	2/20/2016 5:53 PM	Spirit Software TSM Server 2	Test
Open Operational Report	2/19/2016 5:52 PM	Spirit Software TSM Server 1	Test
Open Operational Report	2/19/2016 5:52 PM	Spirit Software TSM Server 2	Test
Open Operational Report	2/18/2016 5:51 PM	Spirit Software TSM Server 1	Test
Open Operational Report	2/18/2016 5:51 PM	Spirit Software TSM Server 2	Test
Open Operational Report	2/17/2016 5:51 PM	Spirit Software TSM Server 1	Test
Open Operational Report	2/17/2016 5:51 PM	Spirit Software TSM Server 2	Test
Open Operational Report	2/16/2016 5:52 PM	Spirit Software TSM Server 1	Test
Open Operational Report	2/16/2016 5:51 PM	Spirit Software TSM Server 2	Test
Open Operational Report	2/15/2016 5:52 PM	Spirit Software TSM Server 1	Test
Open Operational Report	2/15/2016 5:51 PM	Spirit Software TSM Server 2	Test

Operational Reporting Vie xOperational Reporting Vie x


localhost/OperationalReportingViewer/DocumentViewer.aspx?storeId=3afdf65b-df1b-4663-a6cf-1ca27cbe7bbf&iscompressed=True

Page 1 of 96Pdf

Operational Report

- Table of Contents
- Custom Summary
- Administrative Schedules
- Failed Client Schedules
- Missed Client Schedules
- Completed Client Schedules
- Activity Log Details
- Client Schedule Summary
- Storage Pool Utilization
- Node Activity Summary
- Node Backup Statistics
- Expiration Statistics
- Reclamation Statistics
- Migration Statistics
- Missed File Details
- Missed File Summary
- Server Processes
 - DRM - Volumes available to go Offsite
 - DRM - Volumes to be returned
 - Completed Client Schedules with Non-Zero
 - All Client Schedules with Non-Zero Return

Sunday, February 21, 2016



TSM Studio Server Operational Reporting

TSM Server Name	Spirit Software TSM Server 1
Version	6.3.5.0
Platform	Windows
Uptime	14 Days 00 Hours 15 Minutes
Report Start Time	5:49 PM
For the last	48 Hours