



TSM Studio Category Manager and Creating your own Dataview's

Written by Graeme Elliott

Table of Contents

Disclaimer	3
TSM Studio Category Manager	4
Adding a Category	6
Editing Categories	8
Deleting Categories	9
Resetting the Categories	10
Add your own Dataview.....	11
Link the Dataview to a Category	12
Unlink a Dataview	12

Disclaimer

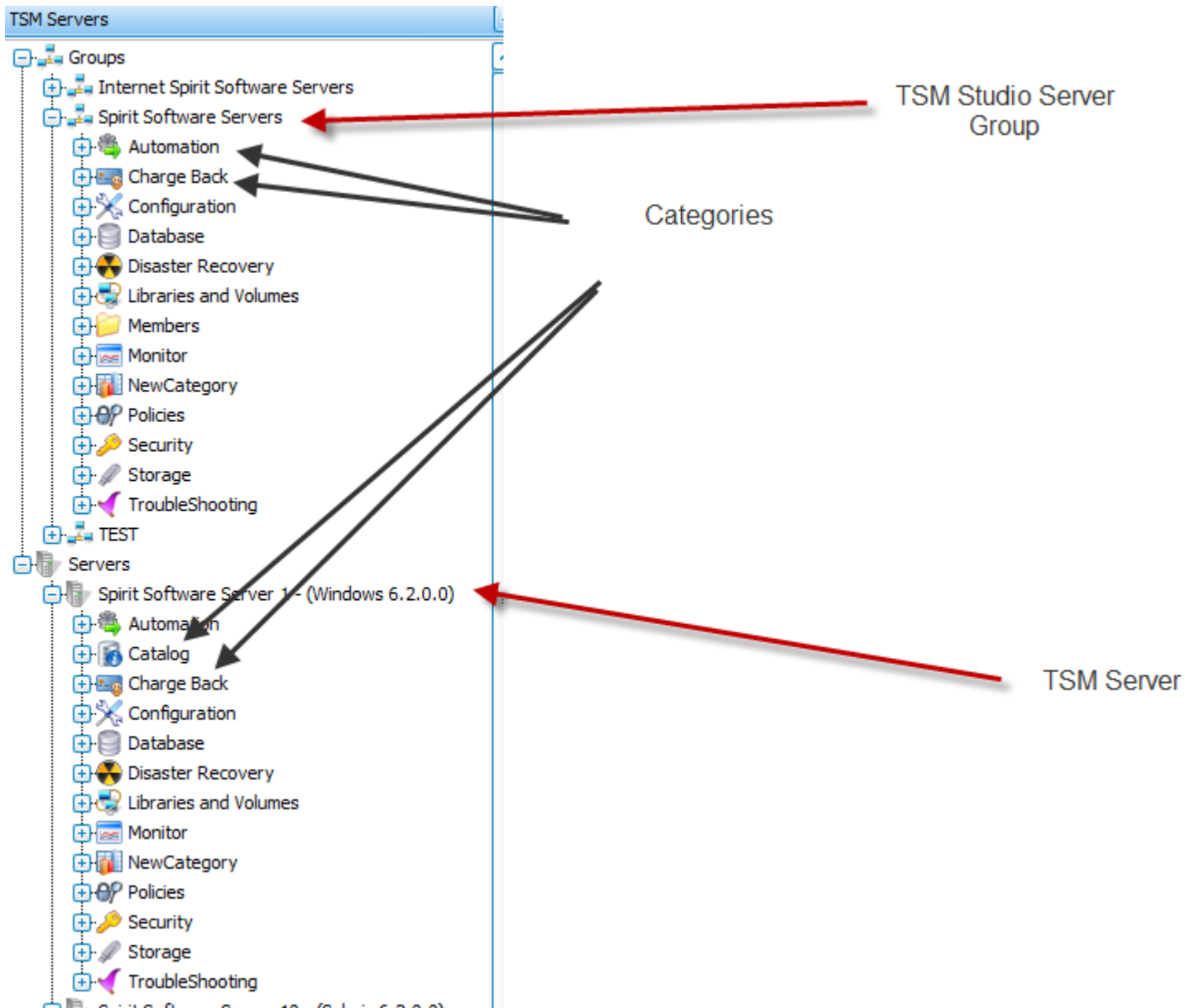
Direct, incidental, consequential, indirect, or punitive damages arising out of your access to, or use of, the site and articles within. Without limiting the foregoing, everything on the site is provided to you 'AS IS' WITHOUT WARRANTY OF ANY KIND, EITHER EXPRESSED OR IMPLIED, INCLUDING, BUT NOT LIMITED TO, THE IMPLIED WARRANTIES OF MERCHANTABILITY, FITNESS FOR A PARTICULAR PURPOSE, OR NON INFRINGEMENT.

"Please note that some jurisdictions may not allow the exclusion of implied warranties, so some of the above exclusions may not apply to you. Check your local laws for any restrictions or limitations regarding the exclusion of implied warranties."

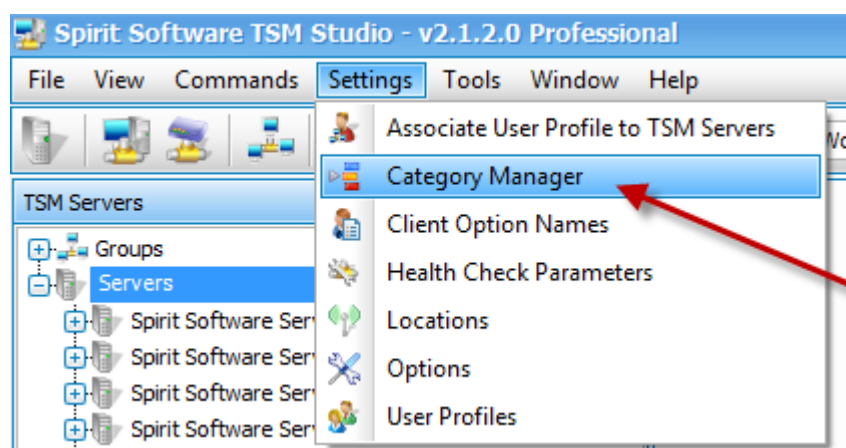
TSM Studio Category Manager

The TSM Studio Category Manager is used to configure the way the Dataview's in TSM Studio are organized. Using the Category it is possible to totally reorganize the layout of the Categories and Dataview's to suit the way you work

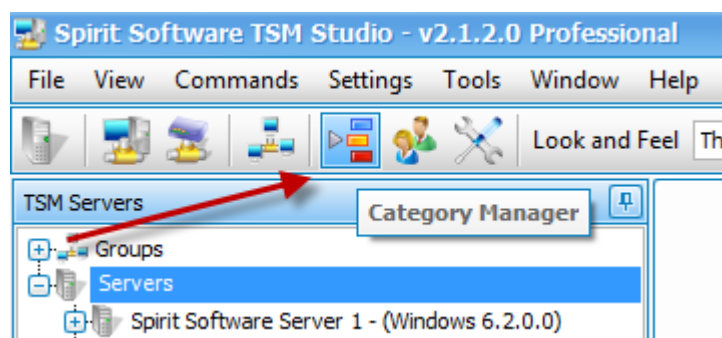
A Category is a folder in which links to Dataviews a created. Most Dataviews are TSM SQL Queries.



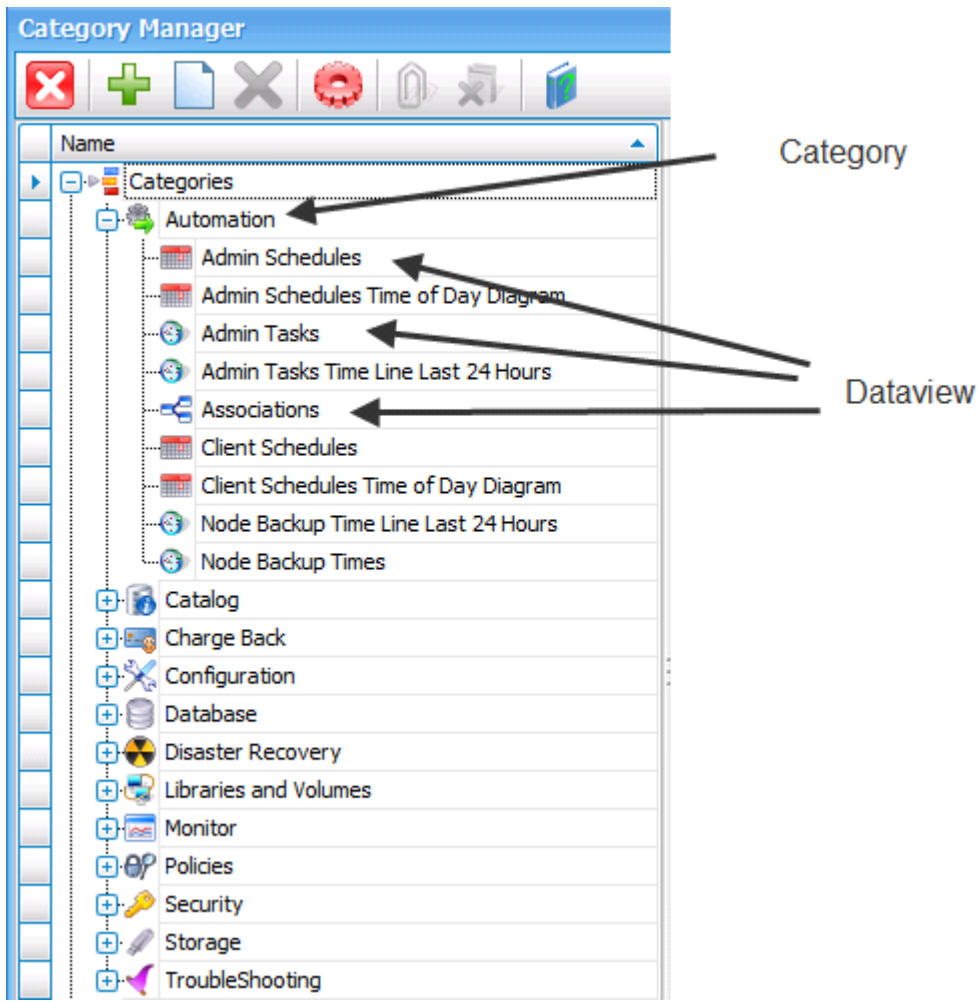
Category Manager is open either from the Setting Menu



Or by using the Category Manager button from the Toolbar

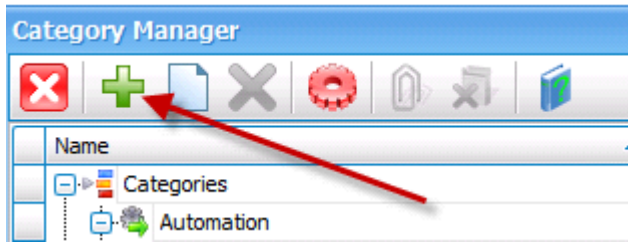


The Category Manager shows the layout of categories and dataview's as displayed in a tree structure under TSM Servers and TSM Server Groups in TSM Studio

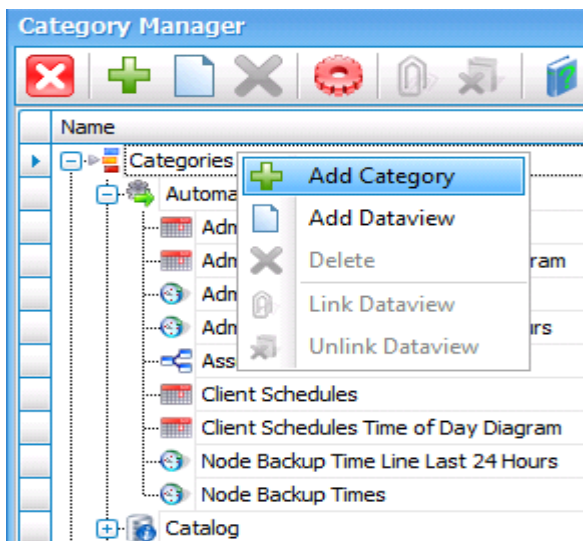


Adding a Category

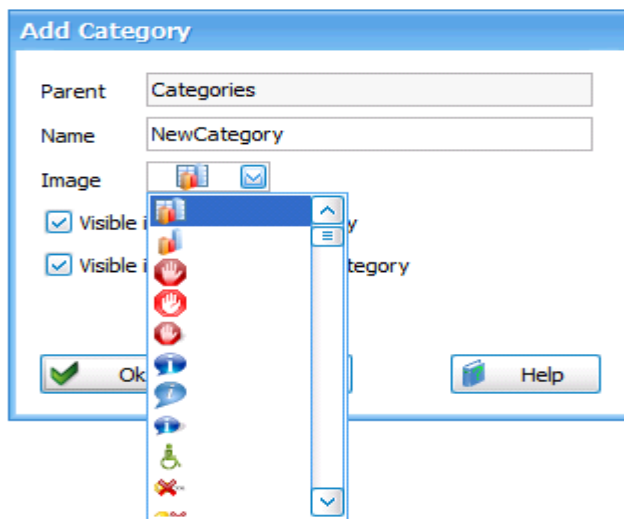
To add a new choose the Add



Or choose Add Category from the context menu



The Add Category dialog is displayed



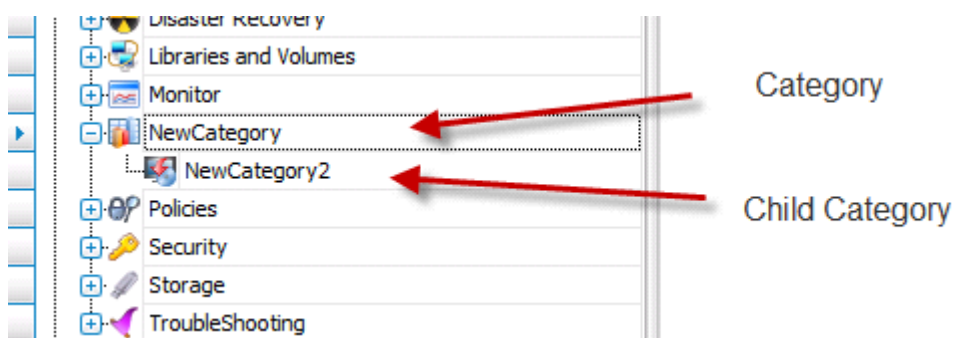
The Parent field is read-only and is either the name of another Category or as in the example is "Categories" making the new Category a top level Category. As in the example below it is possible to create subcategories by first selecting an existing Category before selecting the "Add Category" button.

The Name field is the name for the new Category and must be unique

Choose an image for this Category, there are over 100 different images to choose from

Visible in the Group Category will display this Category at the group level

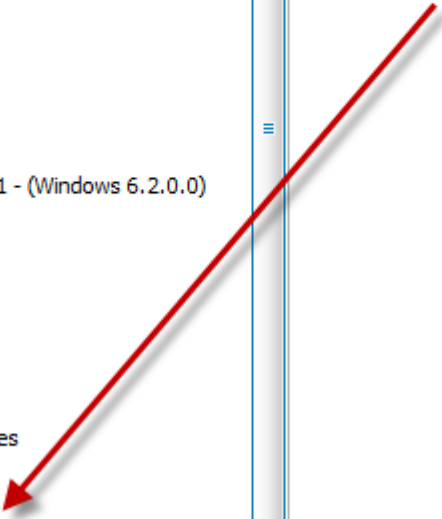
Visible in the TSM Server Category will display this Category at the TSM Server level



After closing the Category Manager these new Categories will be visible in TSM Studio

TSM Servers

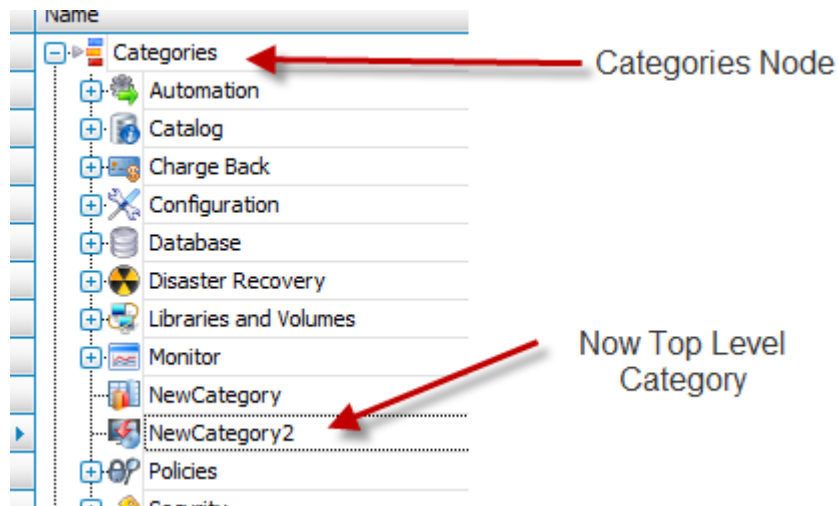
- Groups
 - Internet Spirit Software Servers
 - Spirit Software Servers
 - Automation
 - Charge Back
 - Configuration
 - Database
 - Disaster Recovery
 - Libraries and Volumes
 - Members
 - Monitor
 - NewCategory
 - NewCategory2
 - Policies
 - Security
 - Storage
 - TroubleShooting
 - TEST
- Servers
 - Spirit Software Server 1 - (Windows 6.2.0.0)
 - Automation
 - Catalog
 - Charge Back
 - Configuration
 - Database
 - Disaster Recovery
 - Libraries and Volumes
 - Monitor
 - NewCategory
 - NewCategory2
 - Policies
 - Security
 - Storage



Editing Categories

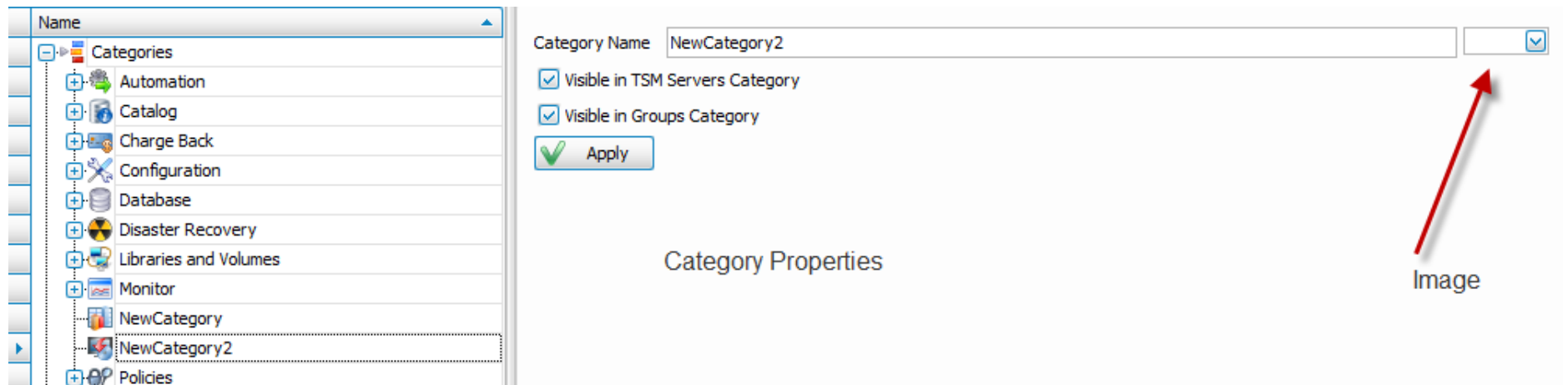
There are a number of ways to edit the properties and position of Categories.

Categories can be moved by dragging them to a new location, for example to make the "NewCategory2" Category a Top level Category drag it on the "Categories" node



To make the Category "NewCategory2" a child Category of "NewCategory" again drag it onto the "NewCategory" node

To change the properties of a Category, select the Category and its properties will be displayed in the right hand pane.

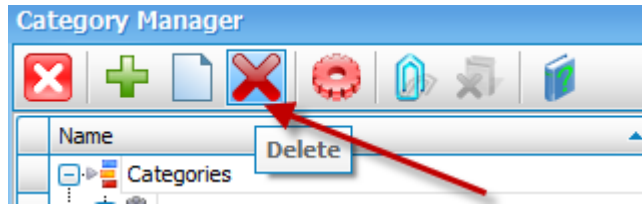


From here the name, image and its visibility options can be modified, after making the change be sure to press the Apply button to make the changes permanent

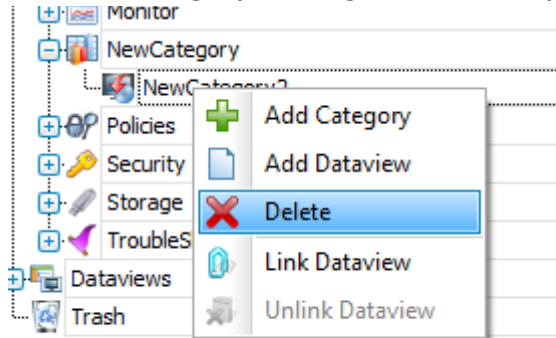
Deleting Categories

There are three ways to delete a Category

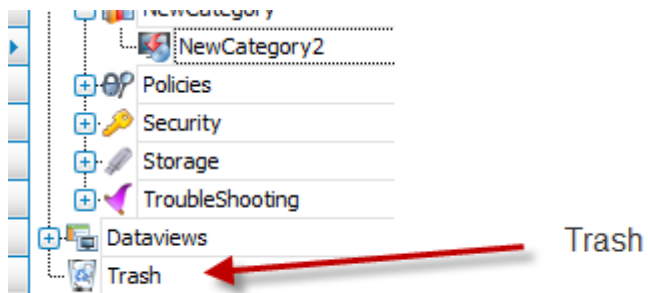
1. Select the Category and press the "Delete" button on the Toolbar



2. Select a Category and right click to display the context menu and select "Delete"

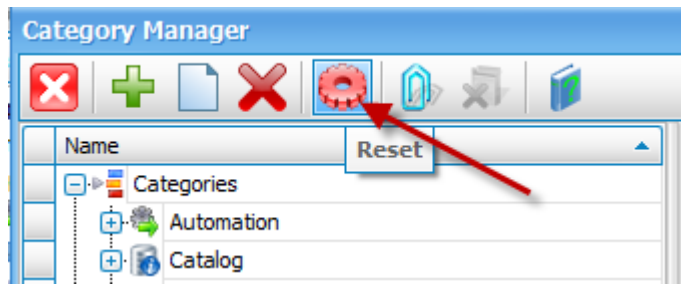


3. Drag the Category in the Trash Node



Resetting the Categories

To restore the state of the Categories back to the installation defaults, select the "Reset" button from the Toolbar menu

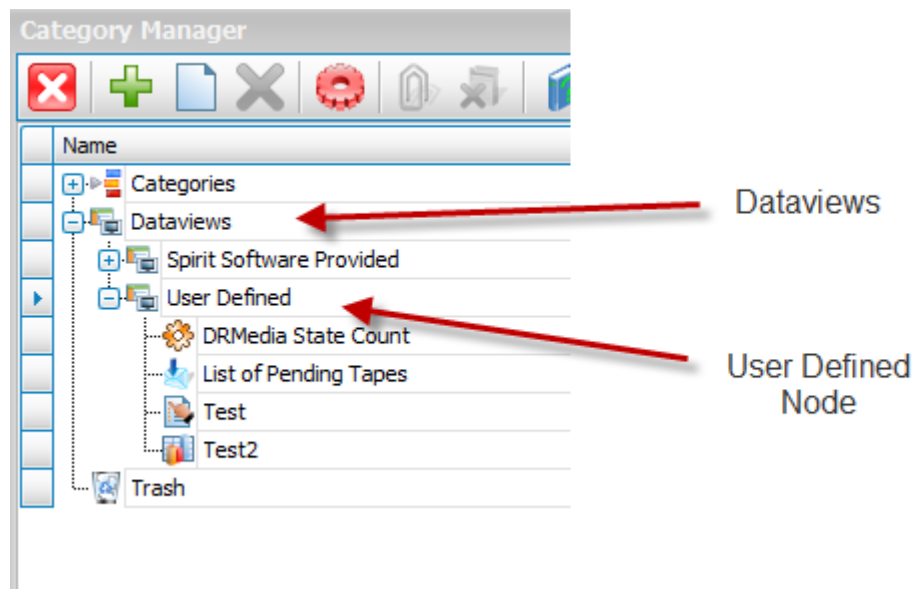


Add your own Dataview

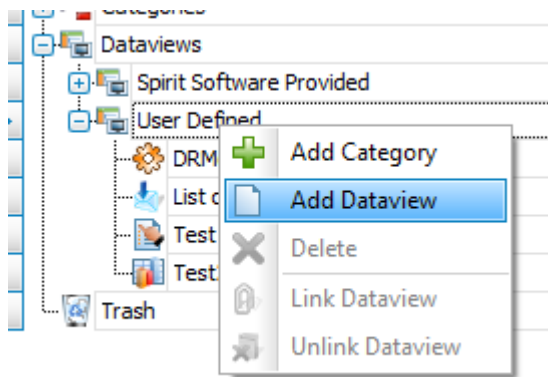
Dataviews are "grid like" views showing the output from a TSM SQL Query. It is possible to create your Dataviews and link them to a Category so they display in TSM Studio just like any of the "Spirit Software" provided Dataviews. To create your own Dataview you first need to create a TSM Studio Library and create the SQL Query, read the "TSM Studio Libraries" pdf on our website to understand how this is done.

Under a Category in the "Category Manager" links are created to Dataviews, it is possible to link Dataviews with multiple Categories.

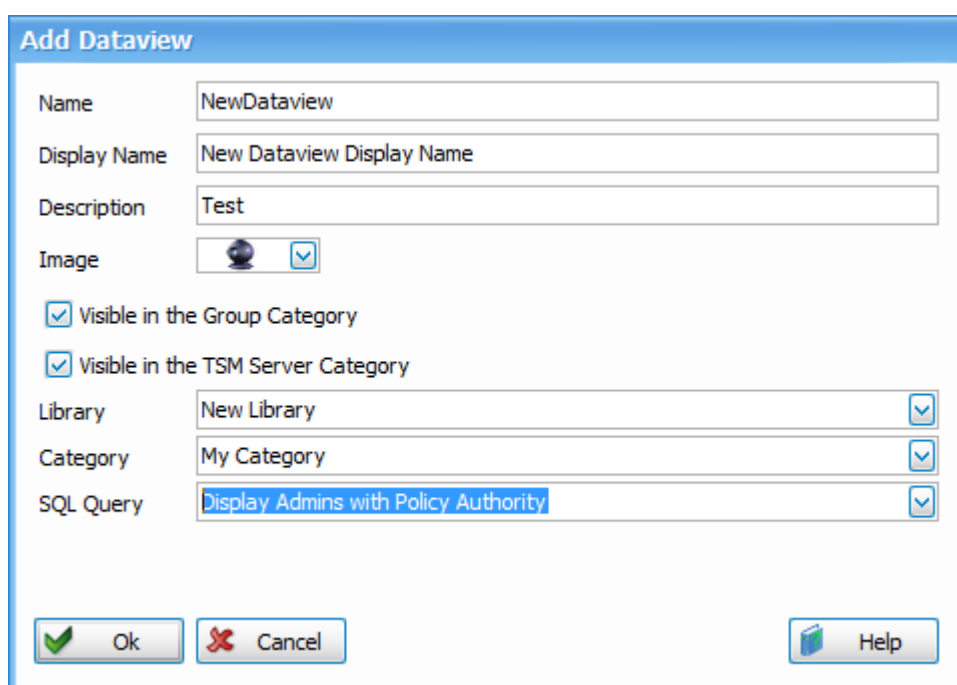
After creating the SQL in a TSM Studio Library the next step is to add the Dataview to the "Category Manager", goto the "User Defined" node under Dataviews



Right Click in the "User Defined" node and select "Add Dataview"



The Add Dataview dialog is displayed

The image shows a screenshot of the 'Add Dataview' dialog box. The dialog has a blue title bar and contains the following fields and options: 'Name' (text box with 'NewDataview'), 'Display Name' (text box with 'New Dataview Display Name'), 'Description' (text box with 'Test'), 'Image' (checkbox with a globe icon and a checkmark), 'Visible in the Group Category' (checkbox with a checkmark), 'Visible in the TSM Server Category' (checkbox with a checkmark), 'Library' (dropdown menu with 'New Library' selected), 'Category' (dropdown menu with 'My Category' selected), and 'SQL Query' (dropdown menu with 'Display Admins with Policy Authority' selected). At the bottom, there are three buttons: 'Ok', 'Cancel', and 'Help'.

Name is the internal name by which this Dataview is known

Display Name is the name that will be displayed in TSM Studio

Description is an optional description for this Dataview

Image is the image to display in TSM Studio for this Dataview

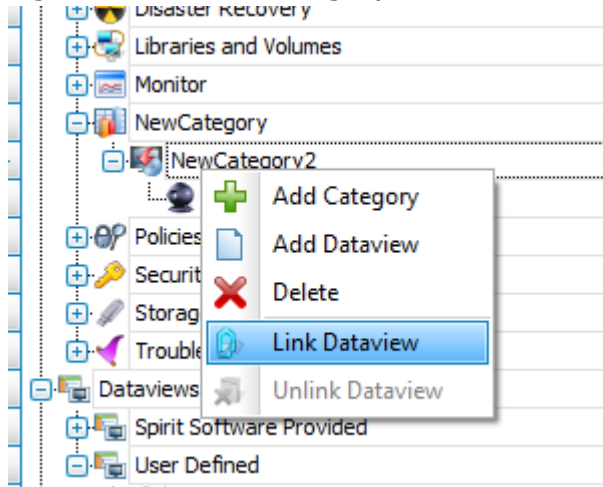
As with the Categories the visibility of the Dataview can be chosen

Library, Category and SQL Query are used to choose the SQL Query from a TSM Studio library for this Dataview

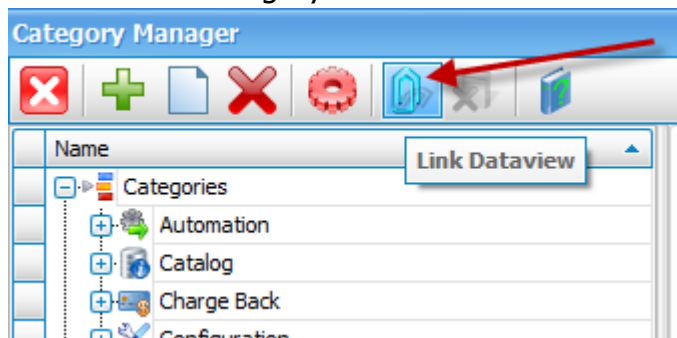
Link the Dataview to a Category

The next step in the process is to link the Dataview to a Category, once this is done the Dataview will be visible in TSM Studio. There are three way to link a Dataview to a Category

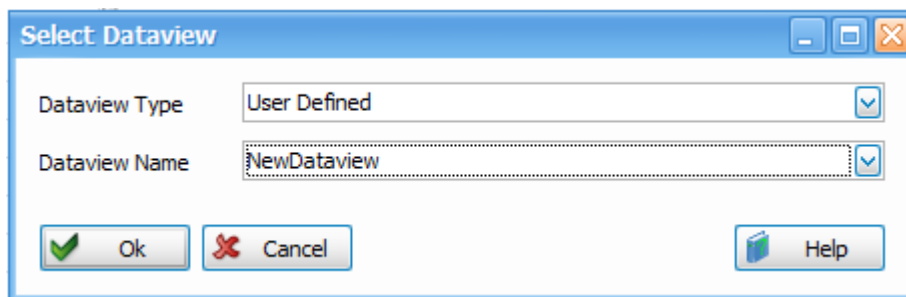
1. Drag the Dataview onto the Category
2. Right Click on the Category where the Dataview will be linked and select the "Link Dataview" Menu Item



3. Or Select the Category where the Dataview will be linked and choose the "Link Dataview" button from the Toolbar



For options 2 and 3 a "Link Dataview" dialog will be displayed



Choose the Dataview to be linked, the Dataview now be available to TSM Studio

Unlink a Dataview

To unlink a Dataview from a Category drag the Dataview from the Category to the Trash Node