



TSM Studio Libraries

Written by Graeme Elliott

Table of Contents

Disclaimer	3
TSM Studio Libraries	4
Creating a New TSM Studio Library	5
Adding an existing TSM Studio Library.....	7
Working with Categories in a TSM Studio Library	8
Adding TSM Studio Library Objects (Macros and SQL Queries)	9
Adding a Macro.....	10
Editing Macros and SQL Queries	13
Deleting TSM Studio Library Objects.....	14
Move Objects in a TSM Studio Library	15
Executing TSM Studio Library Objects	16

Disclaimer

Direct, incidental, consequential, indirect, or punitive damages arising out of your access to, or use of, the site and articles within. Without limiting the foregoing, everything on the site is provided to you 'AS IS' WITHOUT WARRANTY OF ANY KIND, EITHER EXPRESSED OR IMPLIED, INCLUDING, BUT NOT LIMITED TO, THE IMPLIED WARRANTIES OF MERCHANTABILITY, FITNESS FOR A PARTICULAR PURPOSE, OR NON INFRINGEMENT.

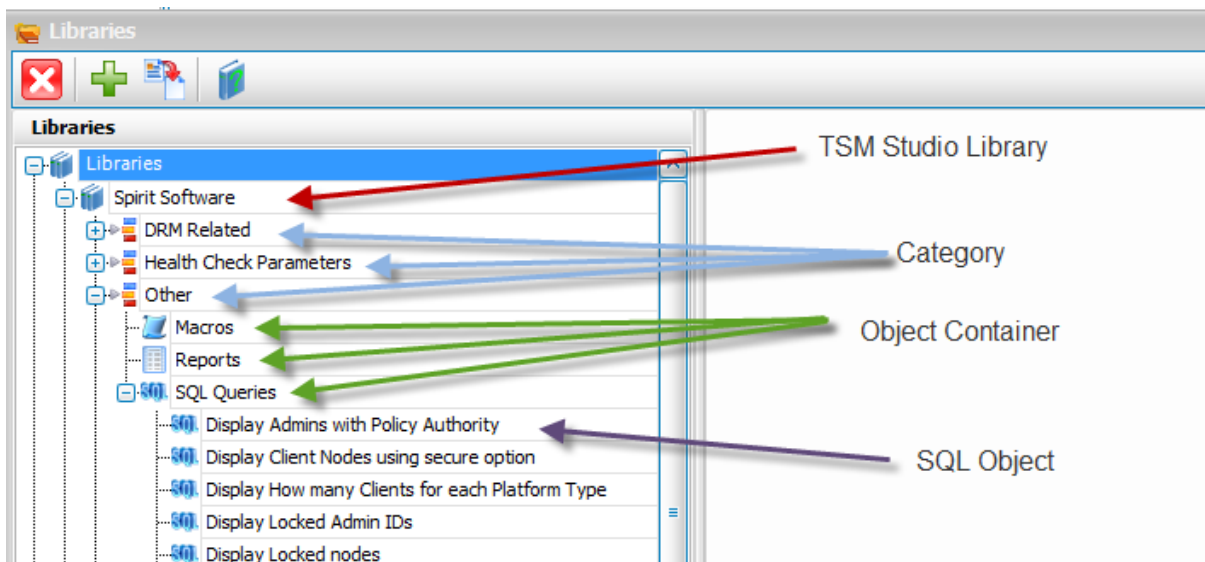
"Please note that some jurisdictions may not allow the exclusion of implied warranties, so some of the above exclusions may not apply to you. Check your local laws for any restrictions or limitations regarding the exclusion of implied warranties."

TSM Studio Libraries

TSM Studio Libraries are a repository for TSM SQL statements, TSM Commands and Dataview Reports objects. A TSM Studio Library is a file that contains a small relational database that can reside on your computer or network and can be shared amongst other TSM Studio users.

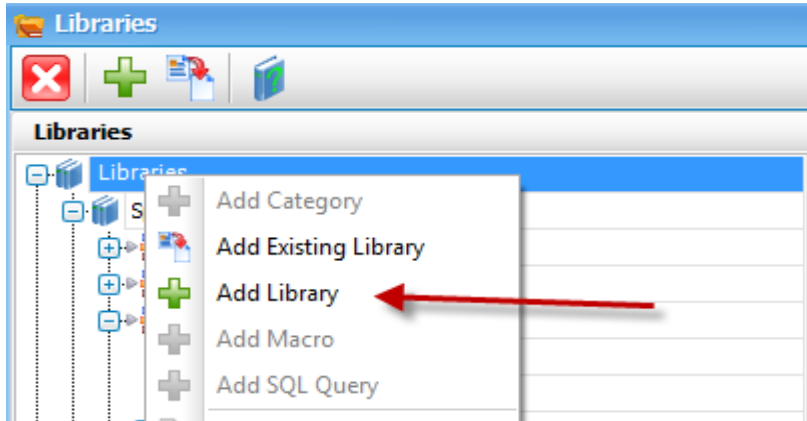
A TSM Studio Library is broken down into categories that contain the above object types (Macros, SQL Queries and Reports), each Object Type has its own container.

As shown here, there is a Library named "Spirit Software" with a number of categories visible "DRM Related", "Health Check Parameters" and "Other". Within these categories there are object type containers for each object type "Macros", "Reports" and "SQL Queries" and within the object type containers there are the actually TSM Macros (TSM Commands), Reports and TSM SQL Queries



Creating a New TSM Studio Library

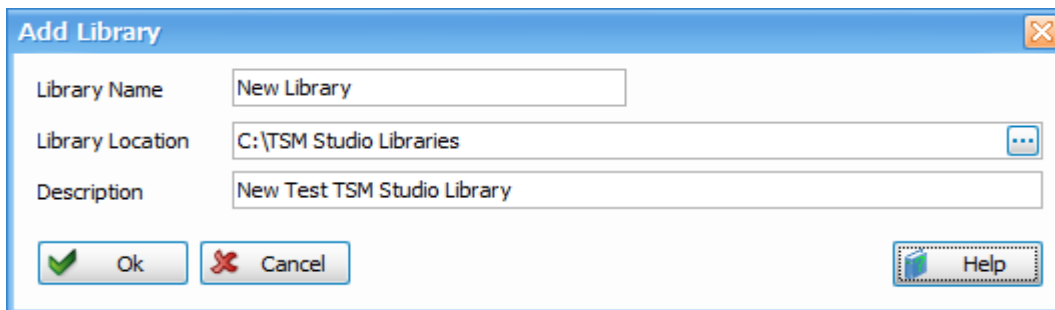
Libraries are created using the Add Library Button on the Toolbar or by right clicking in the Libraries window and selecting Add Library



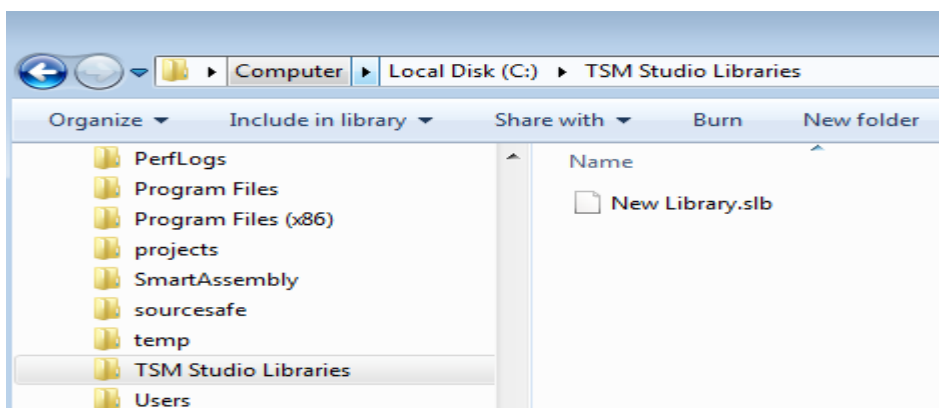
At the Add Library dialog, type in the name of the Library (This name will also be the File Name on disk).

Enter the Library Location, this is the drive letter and folder where the TSM Studio Library will be located.

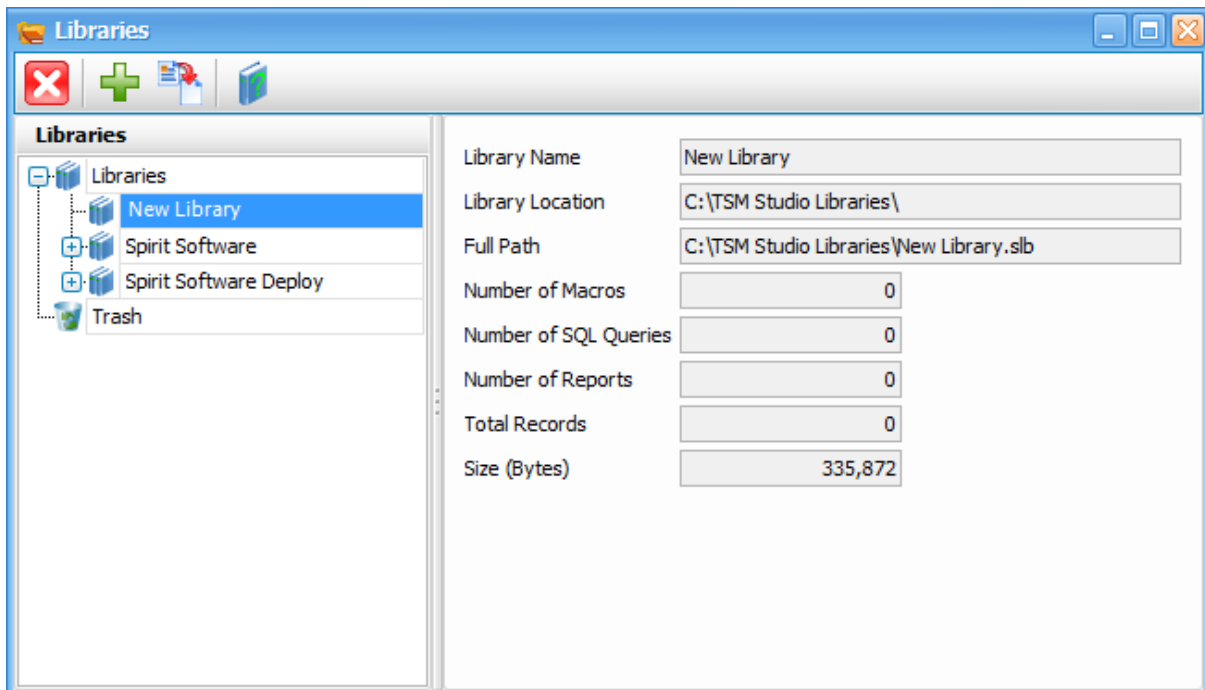
Enter an optional description for this library



This will create a File "New Library.slb" in the folder "C:\TSM Studio Libraries" as shown here

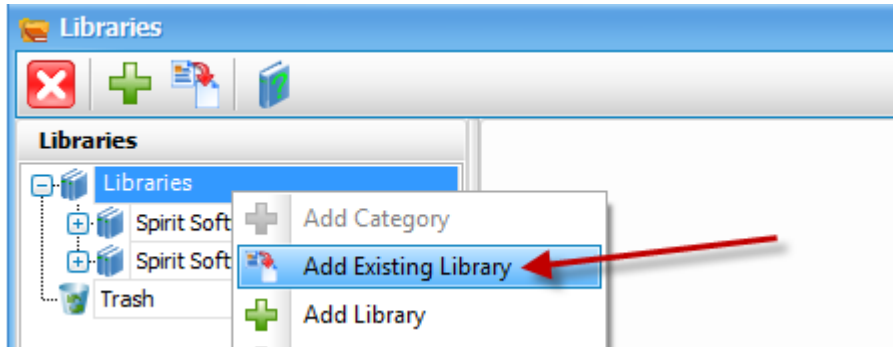


This new library will be available in the list of libraries and by selecting the library, information regarding that library can be viewed.



Adding an existing TSM Studio Library

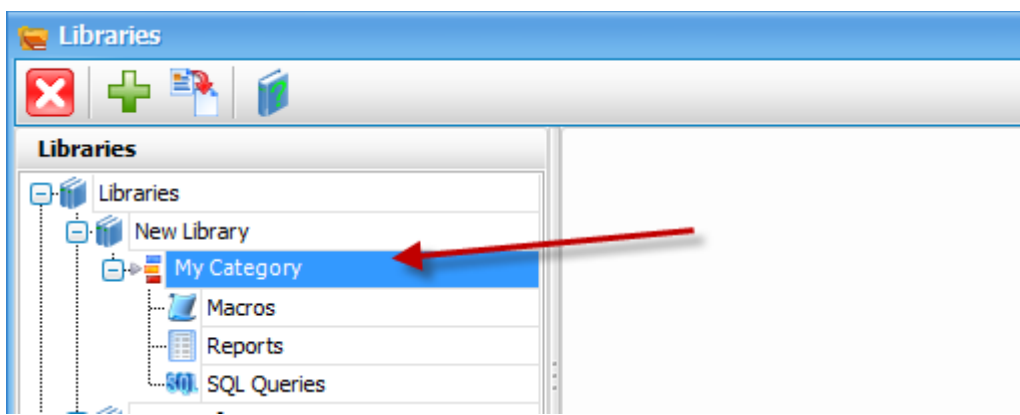
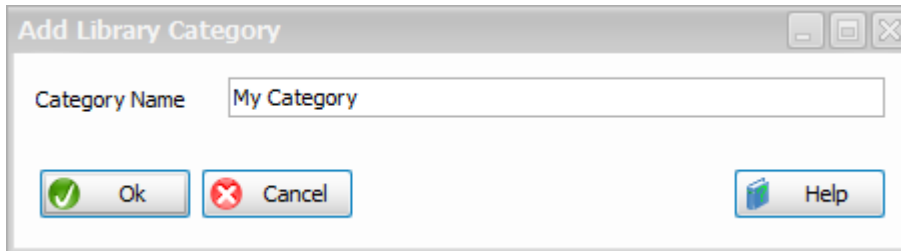
To add a Library that was previously created, select the "Add Existing Library" 'button' from the Toolbar or right click in the Libraries window



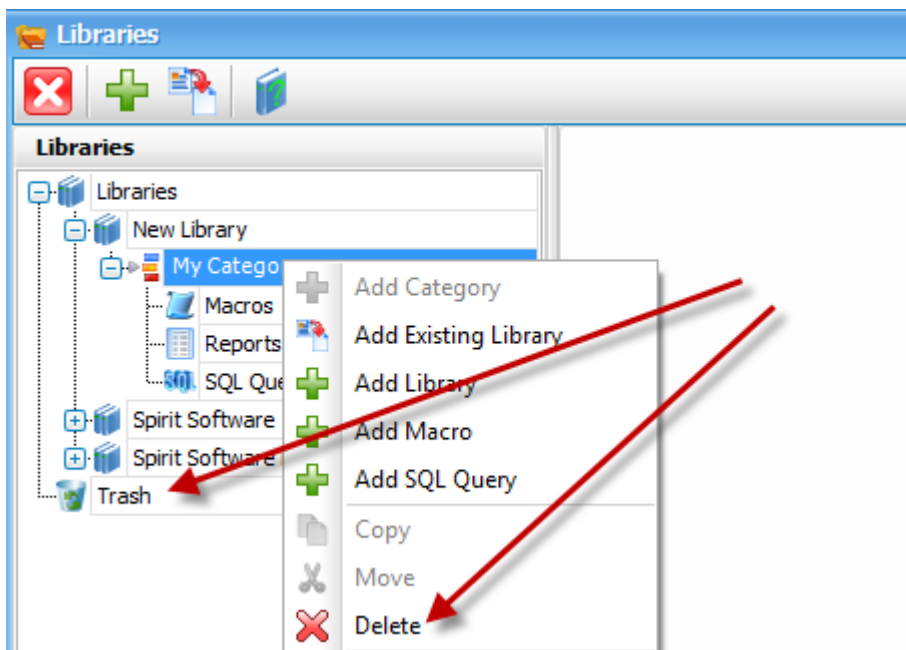
Find the Library on disk and the existing will now be available

Working with Categories in a TSM Studio Library

The next step is to add categories to the Library, Right Click in the Library and select "Add Category". Category names must be unique within a TSM Studio Library.



To Delete the Category, right click and select Delete or drag the Category to the Trash container. Note that all objects in that Category will then be deleted

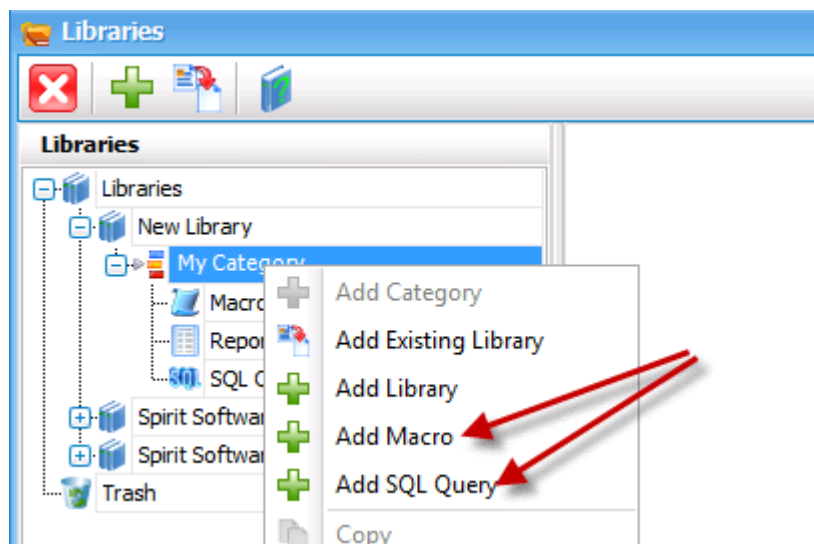


Adding TSM Studio Library Objects (Macros and SQL Queries)

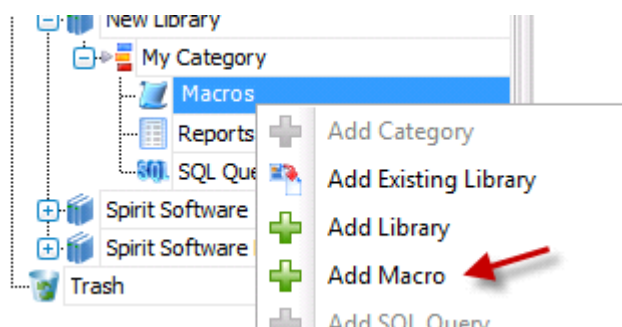
It should be noted here that Reports are not created using this interface, reports are created from the Dataview's that the report is based on. See the "Getting Started with the Report Designer" document on our website on how to add reports. However a "Report" can be edited and executed from this interface.

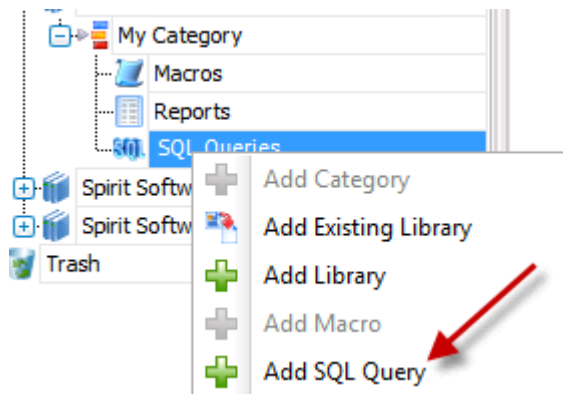
There are three types of objects currently stored in a TSM Studio Library, Macros (TSM Commands), SQL Queries and Reports though as mentioned above reports cannot be created using this interface.

Creating a SQL Query or TSM Macro can be done in two ways, right click on the "Category" that you wish the Macro or SQL Query to and select "Add Macro" or "Add SQL Query"



Or select the "Macro" or "SQL Query" container under the Category and right and choose with "Add Macro" or "Add SQL Query"





Adding a Macro

A screenshot of the 'Macro Management' dialog box. The dialog has a blue title bar and standard window controls. It contains several input fields and checkboxes. The 'Library' field is set to 'New Library', 'Name' is 'New Macro', and 'Description' is 'Macro Description'. There is an unchecked checkbox for 'Display Confirmation Message' and a text field for 'Confirmation Message' containing 'Are you sure you want to execute this command?'. Below these are three fields for 'Commands', 'Tables', and 'Columns', each with a dropdown menu icon. The 'Commands' field contains 'COPY CLOPTSET (Copy a client option set)', 'Tables' contains 'ADMIN_SCHEDULES', and 'Columns' contains 'PRIORITY'. At the bottom is a large text area containing the SQL query 'QUERY LIBRARY F=D'. At the very bottom are 'Ok', 'Cancel', and 'Help' buttons.

Name: Names must be unique within a category

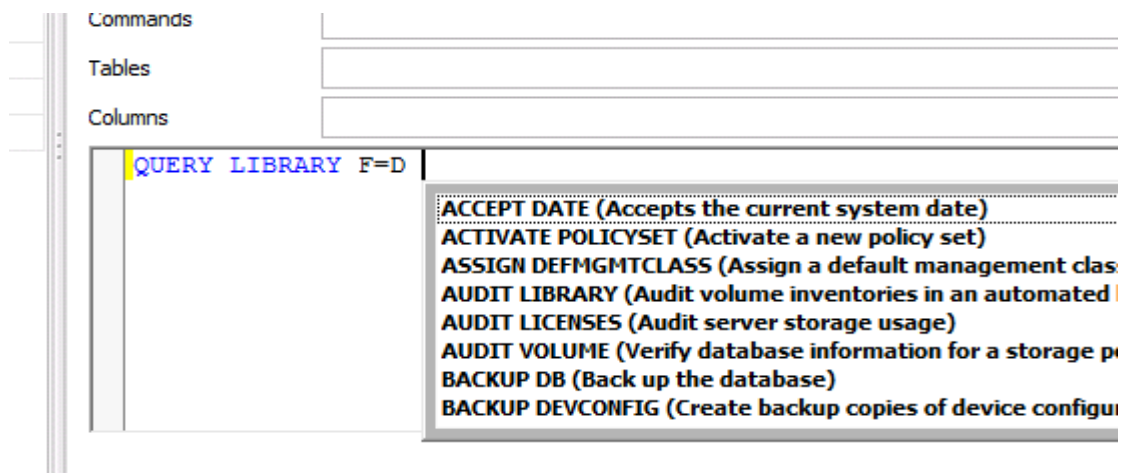
Description: Optional

Display Configuration Message, use this option to display a message before running the Macro, A Dialog will display the message along with a "Yes", "No" option, if "No" is selected then the Macro will not be run (NOTE: there is a problem with this feature prior to release 2.1.2.0)

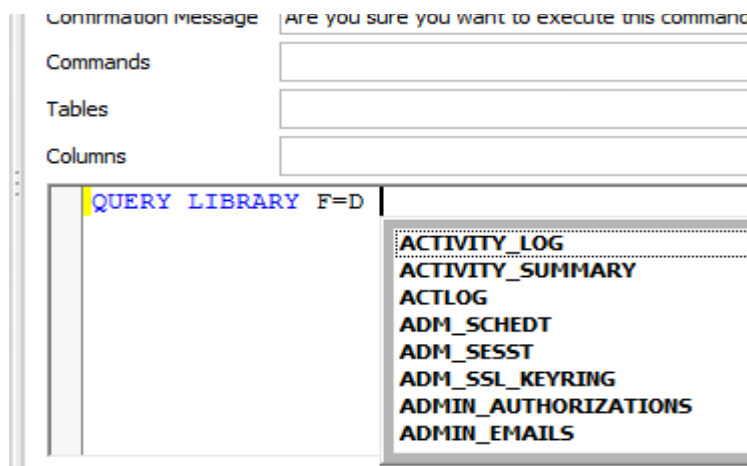
Confirmation Message is the Message to display when the Display Configuration Message checkbox is checked.

The Commands, Tables and Columns can be used to paste the available TSM Commands, TSM Tables and columns into the editable area at the bottom of the dialog. Also with this editable area the available Control Keys are available

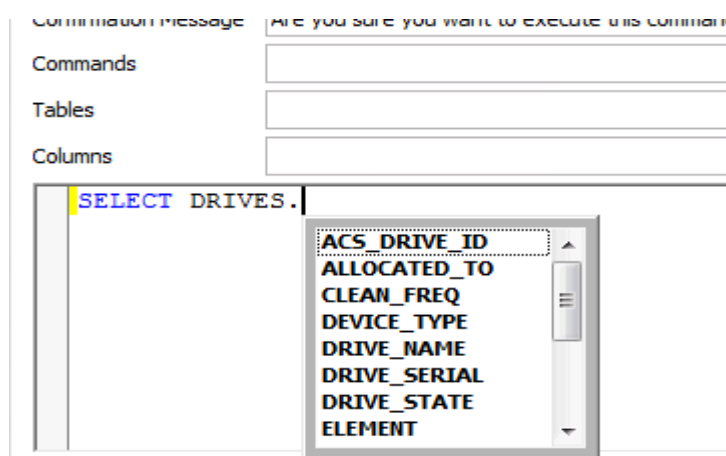
Control-C will display available TSM Commands



Control-T will display available TSM Tables

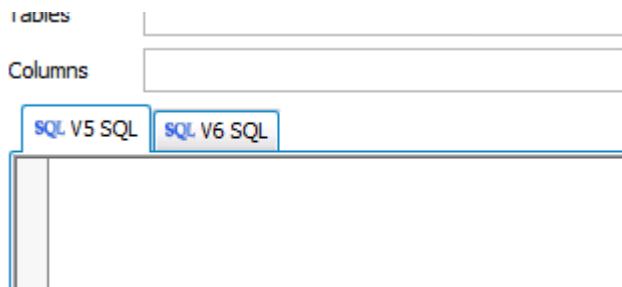


After selecting a Table and pressing the "." Will display a list of available columns for this table



After completing the TSM Command select Ok to save it

The process is the same for creating a SQL Query, the differences are highlighted here.



The image shows a user interface for creating a SQL query. It features two input fields: 'Tables' and 'Columns'. Below these fields are two tabs: 'SQL V5 SQL' and 'SQL V6 SQL'. The 'SQL V6 SQL' tab is currently selected and highlighted with a blue border. The main area below the tabs is a large text input field for the SQL query.

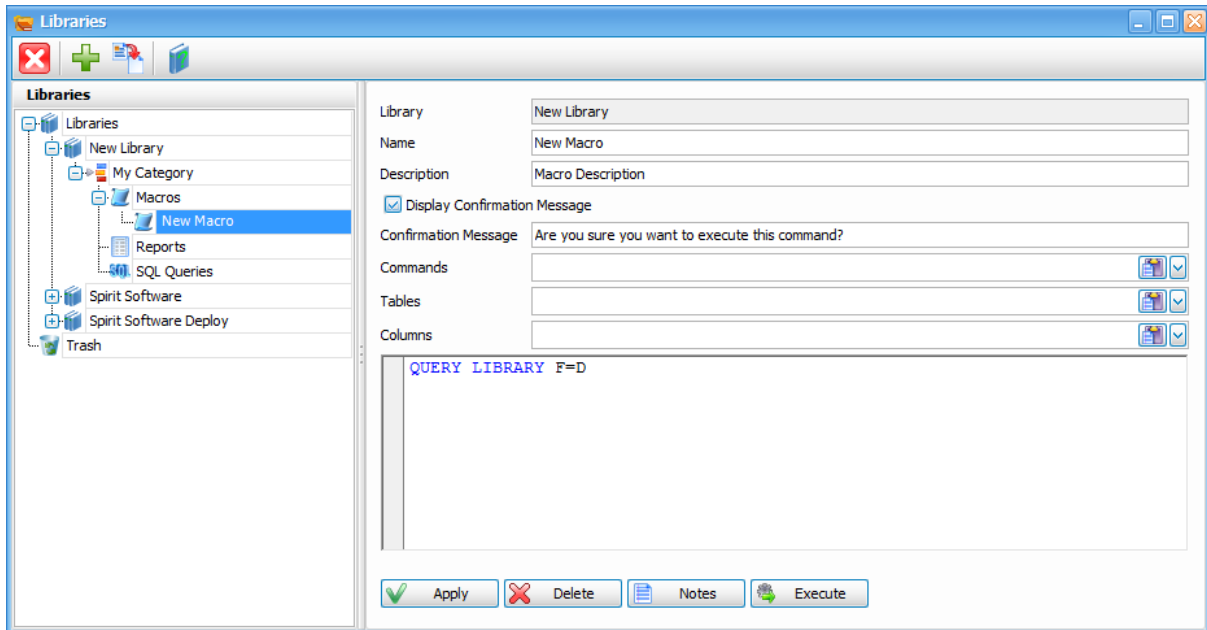
Some of the Table names have changed from TSM version 5 to TSM version 6, (such as Nodes to NodesView), if you know this to be the case you can enter the version 5 and version 6 under the different tabs as show above. If the V6 SQL Query is left blank then TSM Studio will use the V5 Query when running this SQL Query on a version 6 TSM Server.

Also available is a check Syntax button to verify the syntax of the SQL Query is correct

The notes button allows for rich text notes to be associated with this SQL Query.

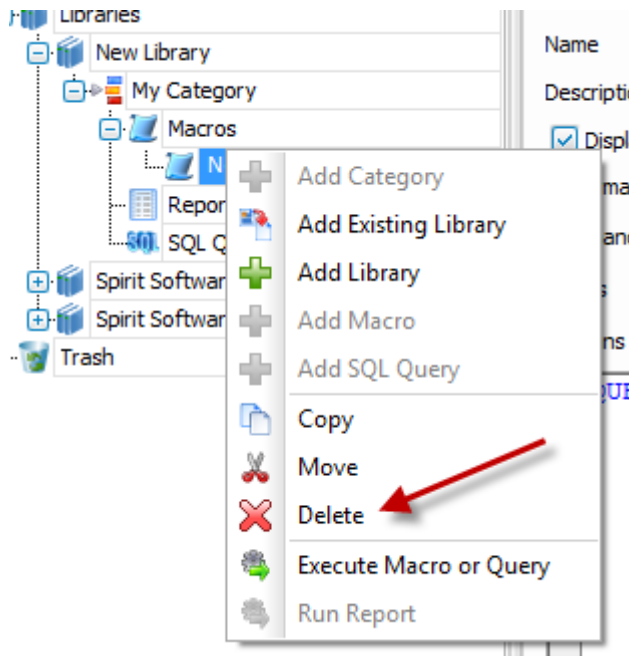
Editing Macros and SQL Queries

To edit a "Macro" or SQL Query, select the Macro or SQL Query from the just select the Macro or SQL Query and its properties will be displayed in the right hand window. Make the required changes and press the "Apply" button.

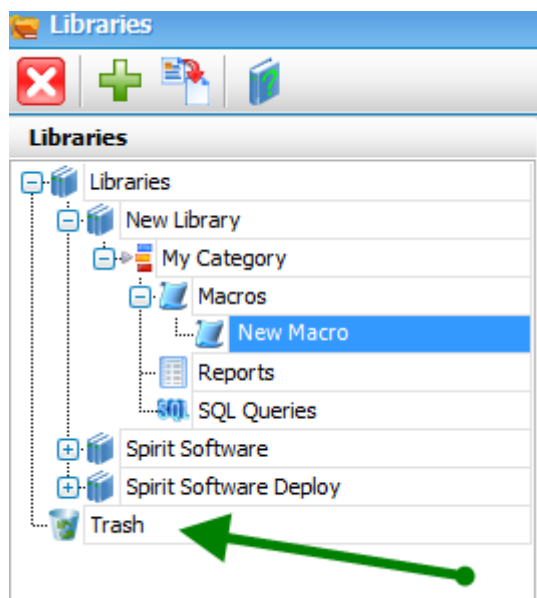


Deleting TSM Studio Library Objects

To Delete any object right click on the object and select "Delete"

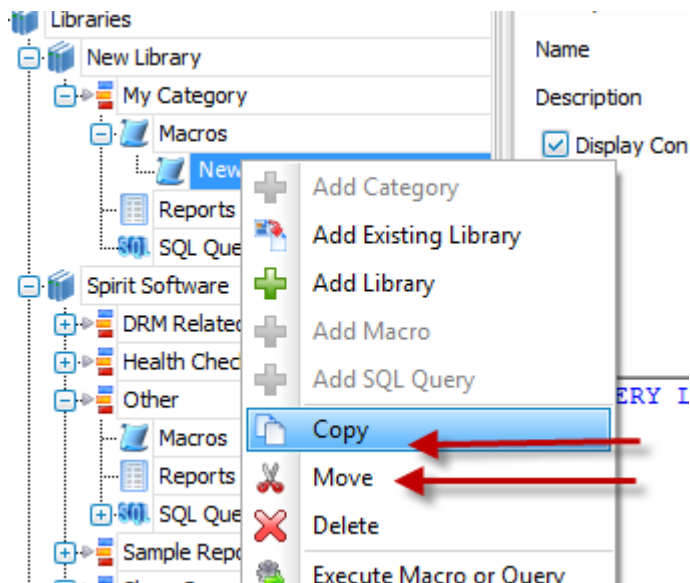


Or drag the object into the Trash Folder



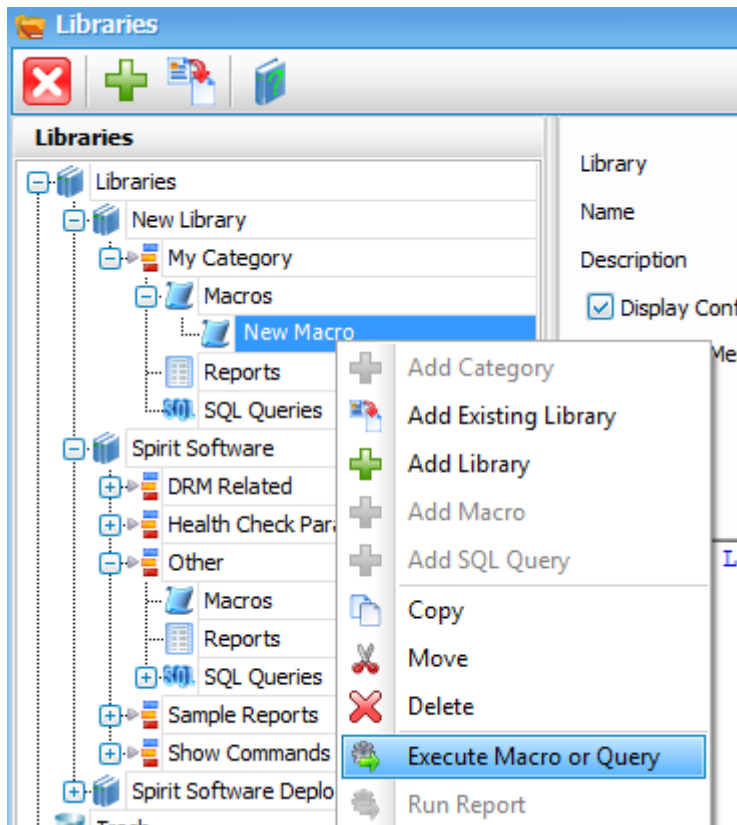
Move Objects in a TSM Studio Library

Objects within TSM Studio Libraries can be moved or copied between categories and between libraries. Objects can be dragged from one category to any other category as long as the name stays unique, (To Copy while dragging hold down the CTRL key while dragging). Also the Move and Copy command on the menu can be used.

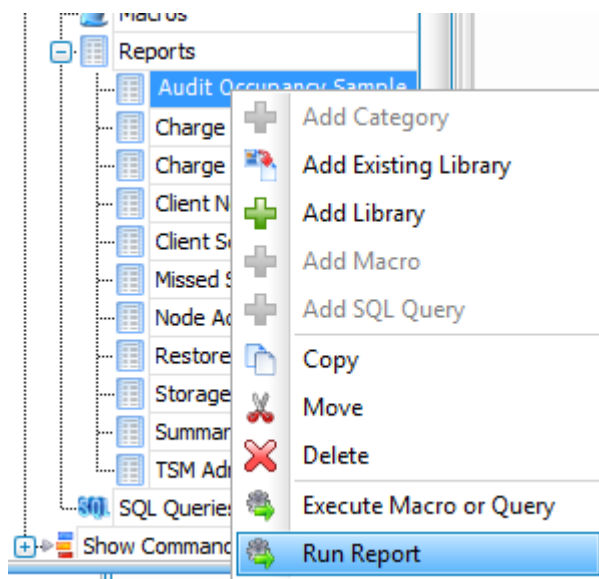


Executing TSM Studio Library Objects

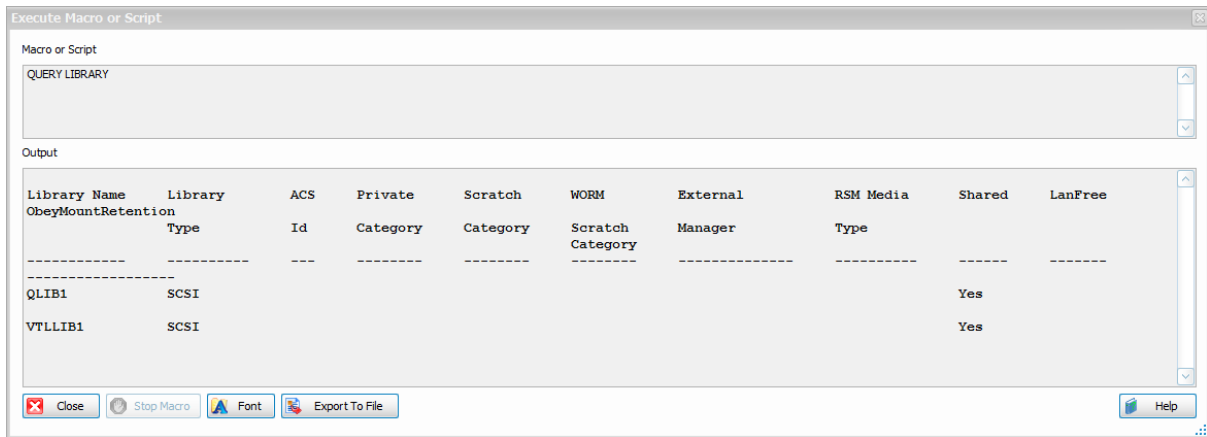
All Objects (Macros, SQL Queries and Reports) can be executed directly from a TSM Studio Library. For a Macro or TSM SQL Query, Right Click on the object and select "Execute Query or Macro"



For a Report right click on the Report and select Run Report



Macros will be executed in their own windows as follows



SQL Query will run in the same window as a Dataview

