



TSM Studio Report Designer Getting Started

This document is a "work in progress" and is currently being released in draft form, please let us know of any omissions or errors

Table of Contents

Disclaimer	3
TSM Studio Report Designer	4
Starting the Report Designer	5
Report Designer Screen Layout.....	6
Designing a Report	7
Saving the Report Template	14
Accessing and Running Reports	16

Disclaimer

Direct, incidental, consequential, indirect, or punitive damages arising out of your access to, or use of, the site and articles within. Without limiting the foregoing, everything on the site is provided to you 'AS IS' WITHOUT WARRANTY OF ANY KIND, EITHER EXPRESSED OR IMPLIED, INCLUDING, BUT NOT LIMITED TO, THE IMPLIED WARRANTIES OF MERCHANTABILITY, FITNESS FOR A PARTICULAR PURPOSE, OR NON INFRINGEMENT.

"Please note that some jurisdictions may not allow the exclusion of implied warranties, so some of the above exclusions may not apply to you. Check your local laws for any restrictions or limitations regarding the exclusion of implied warranties."

TSM Studio Report Designer

Included in TSM Studio is a powerful report designer for creating your own customized reports. Using the report designer data contained in any of the TSM Studio Dataviews can be displayed in a report form, these report templates can be saved to be used again.

A report template is unique to a Dataview and can only be used within the Dataview that is was created.

Starting the Report Designer

On every most of the grid based Dataview's there are two icons on the toolbar and in the context menu



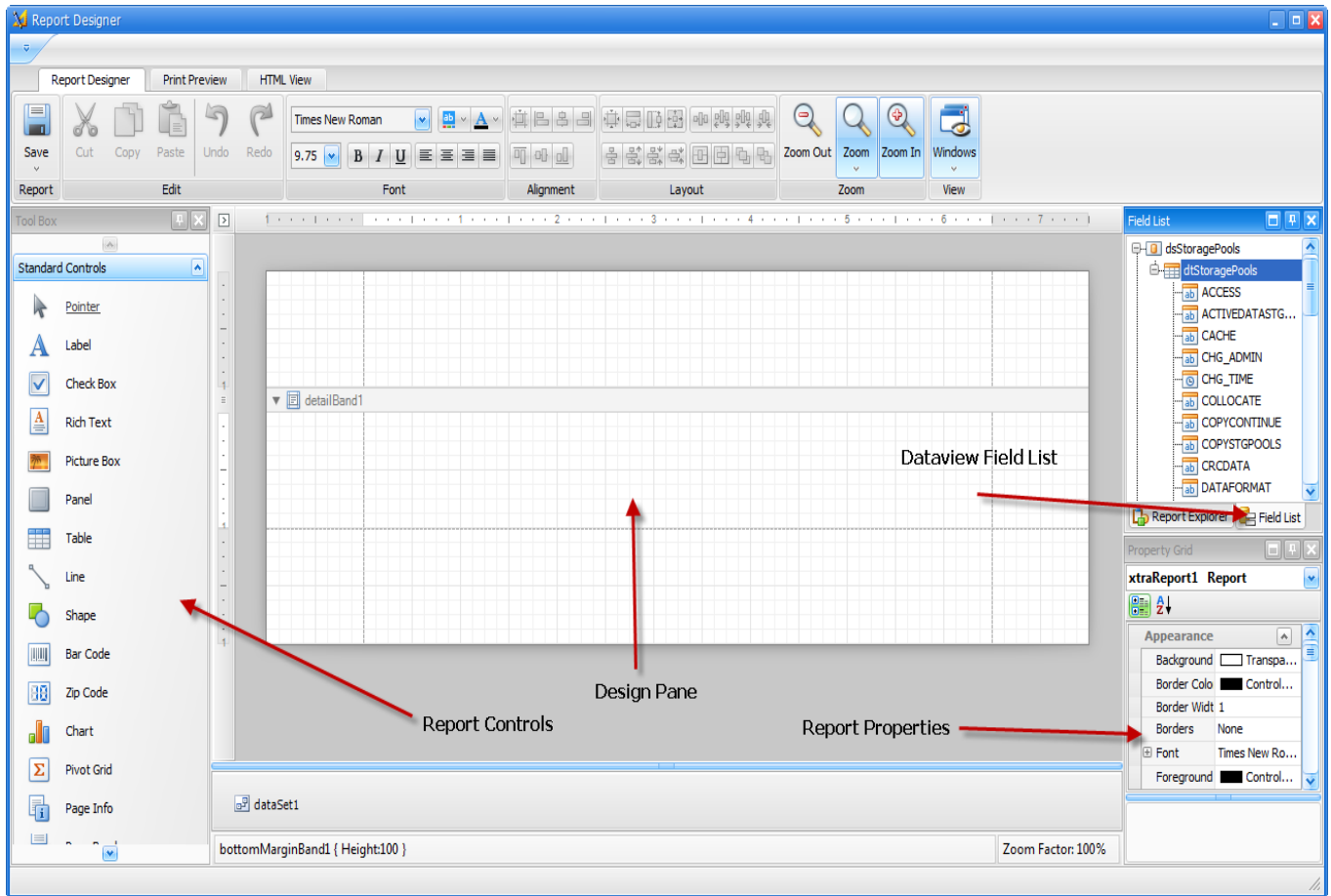
Starts the Report Designer



Starts the Reports Dialog where Report Templates that have previously created can be run

In the following examples we will use the Storage Pools Dataview to show to use the Report Designer. Click on the Report Designer Icon to start the Report Designer

Report Designer Screen Layout



Design Pane: This is where the report controls and Dataview fields are placed.

Report Controls: Controls that can be used to create the report

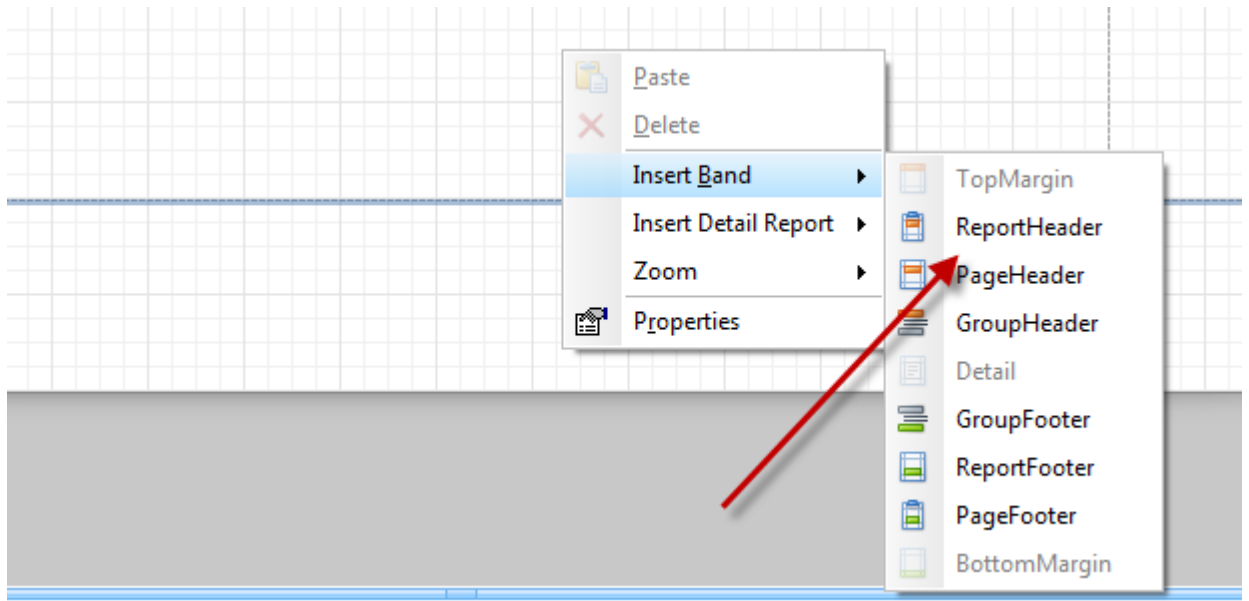
Report Properties: Properties for the Report, including Borders, Page Size, Fonts, Colours etc

Dataview Fields: This is the list of available fields from the Dataview that can be placed on the report.

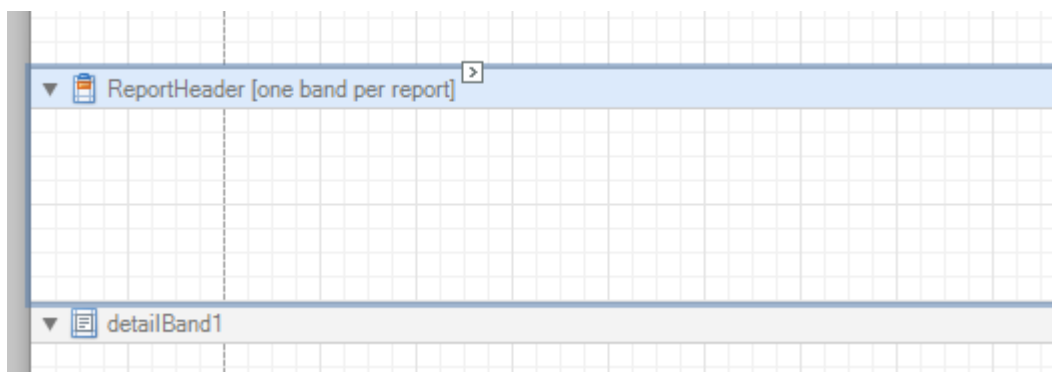
Designing a Report

By default a Detail Pane will already exist on the design Pane

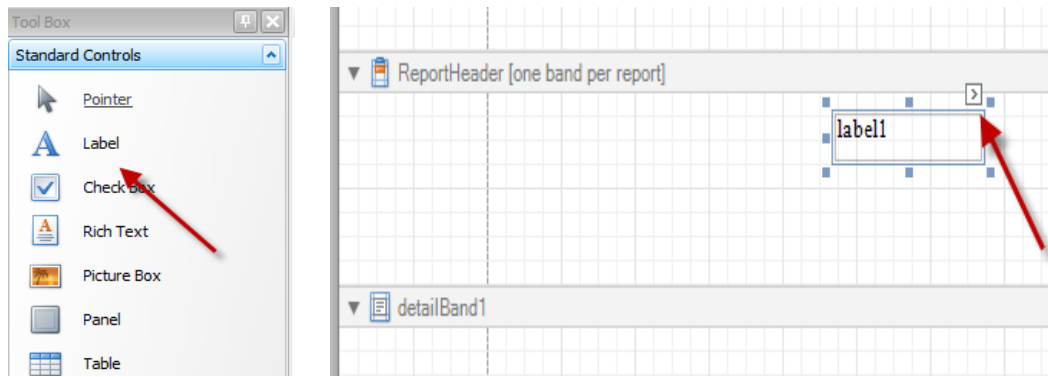
Right click on the Design Pane to display the Context Menu and select Insert Band→Report Header



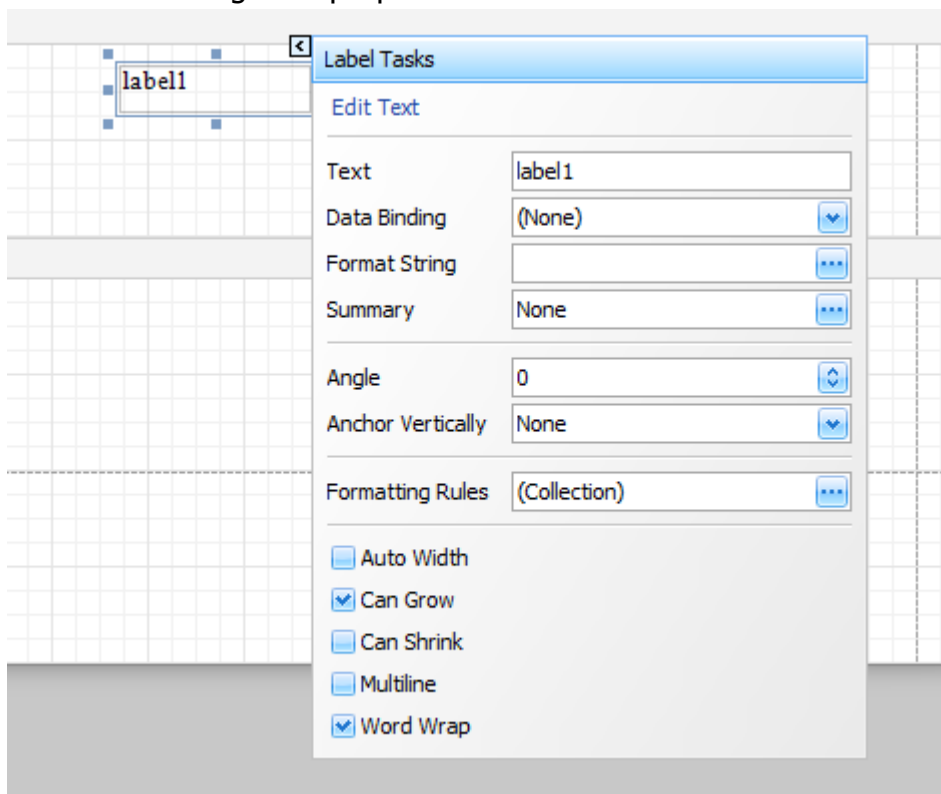
This will create a Report Header section in the design Pane. The Report Header is displayed once per report on the first page.



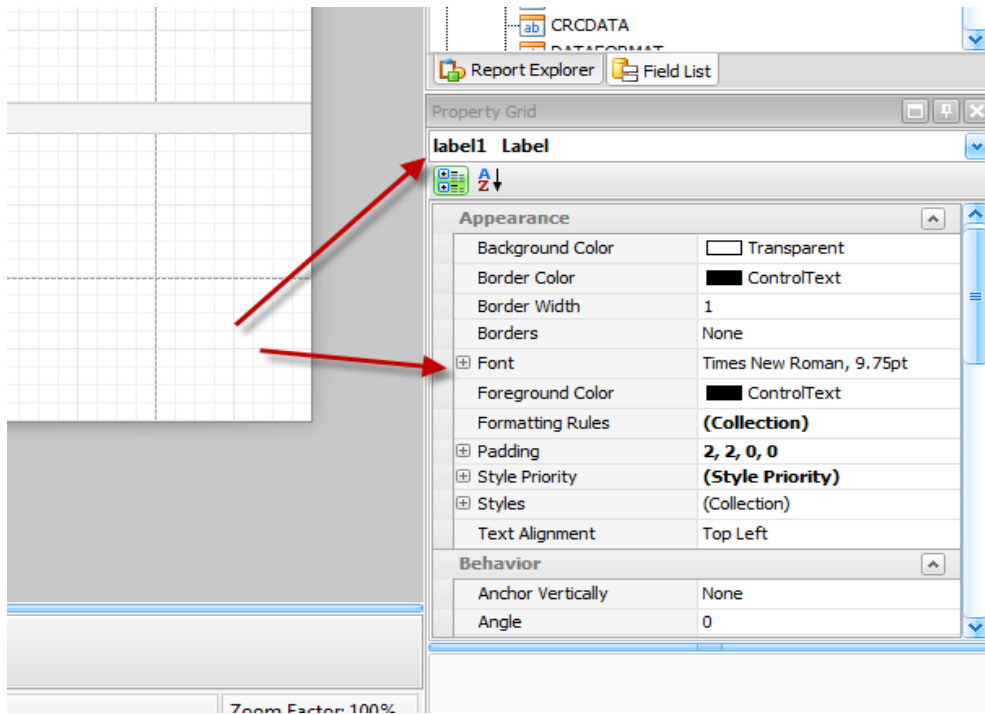
So now we will place a Label onto this Report Header section. In the Report Controls there is a Control named "Label", drag this onto the Report Header.



On the top right corner of the label control you will see a small box, click on this box to change the properties of the label control

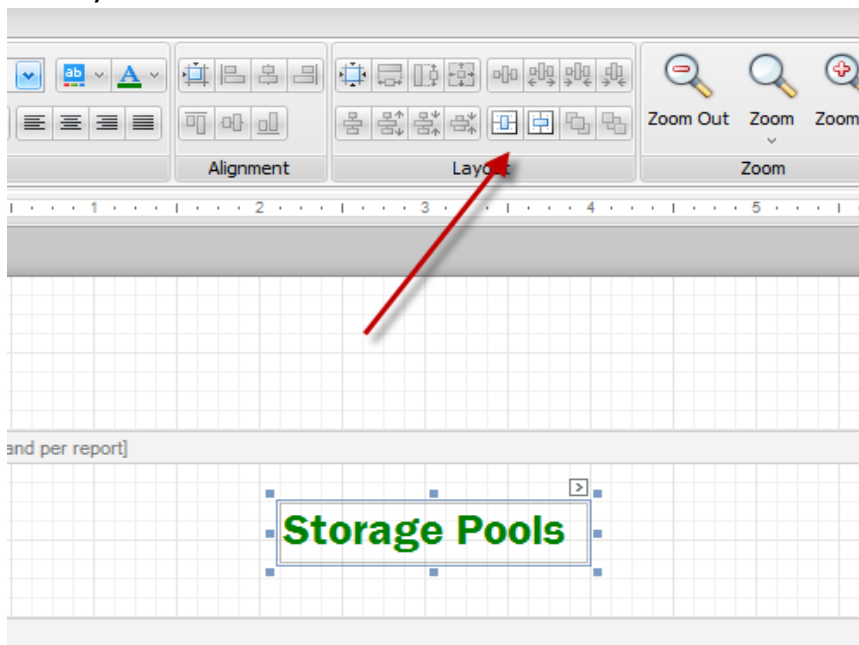


For all the label control properties you will notice that the properties box in the bottom right hand of the Report Designer now contains the properties for the Label Control

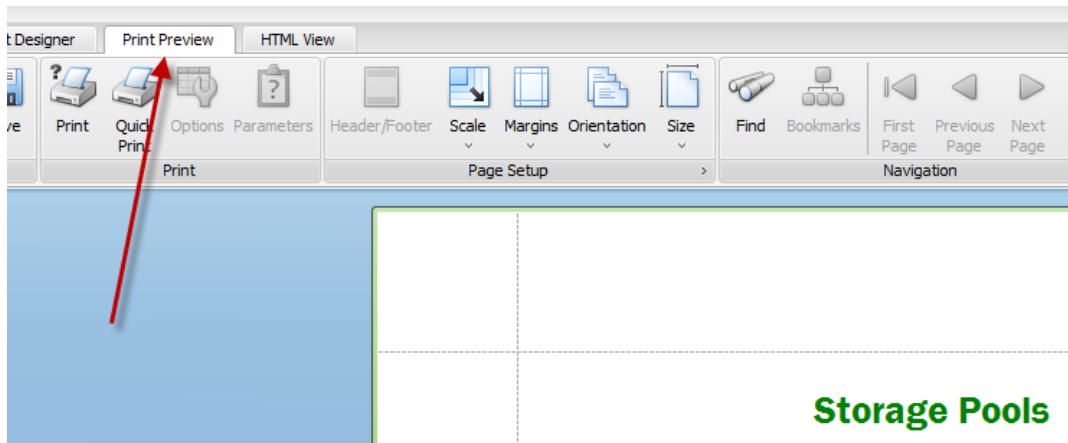


This Property grid will show the properties for which ever control is currently selected.

So go ahead and change the text, font and colour of the label control. To centre the text in the middle of report header section, use the centre icons on the Layout Section of the Toolbar

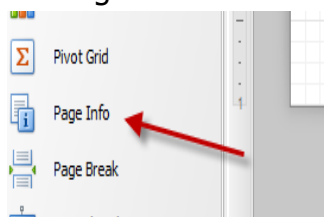


At any time during the creation of the report select the Print Preview tab at the top of the designer to see how the report looks

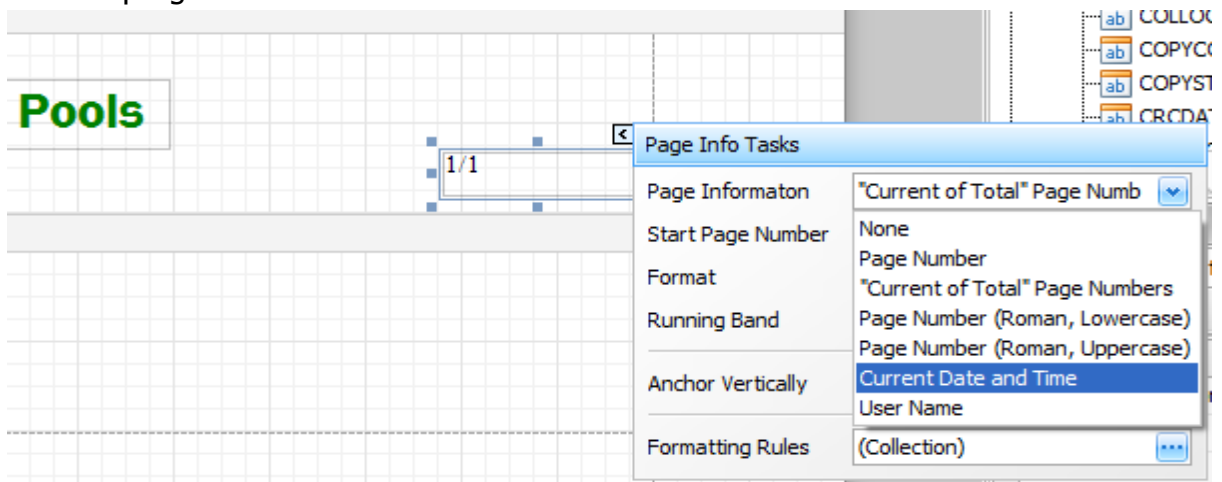


To return to the report designer select the Report Designer Tab

Next we will place the Page Info control on the Report Header Section, grab the Page Info control and drag it onto the Report Header section



After dragging the Page Info control onto the form select the properties icon in the top right hand corner



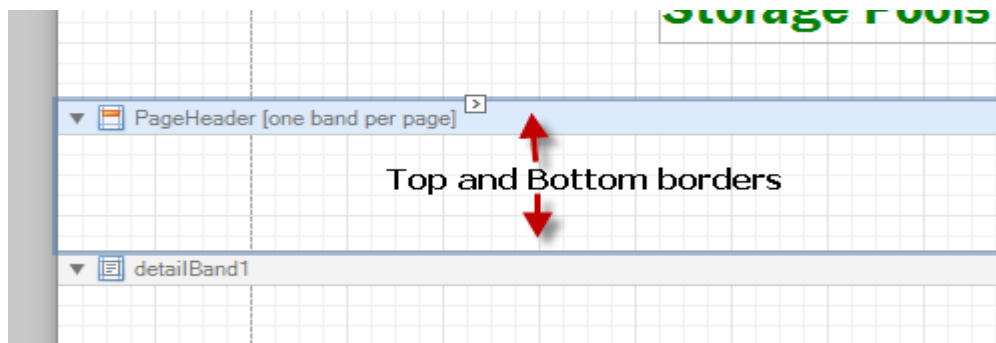
The Page Info control can display a number of different types of data

- Page Number (default)
- Total Pages
- Current Date and Time
- User

Select Current Date and Time from the Page Information drop down. To change the format of the date, use the format property.



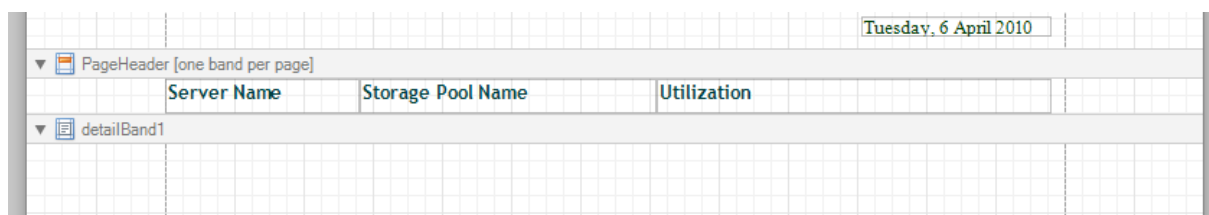
Next we will insert a Page Header Band. The Page Header is displayed at the top of each page and can be used to display column headers or other relevant information. To insert a Page Header right click in the design pane and choose Insert Band→Page Header



To resize the Page Header so it takes not take up so much space on the report, grab one the borders (top or bottom) and move it to make the Page Header smaller. In this example we will only use the following fields from the Dataview

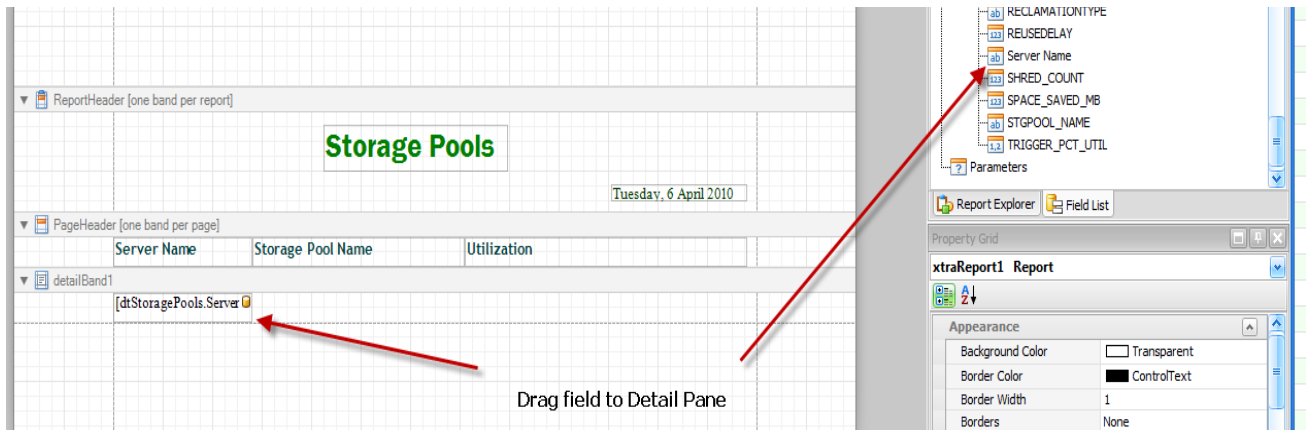
- Server Name
- Storage Pool Name
- Utilization

So we will add Column Headers for these fields in the Page Header Section. Drag three label controls onto the Page Header and change their text to be the name of the three fields

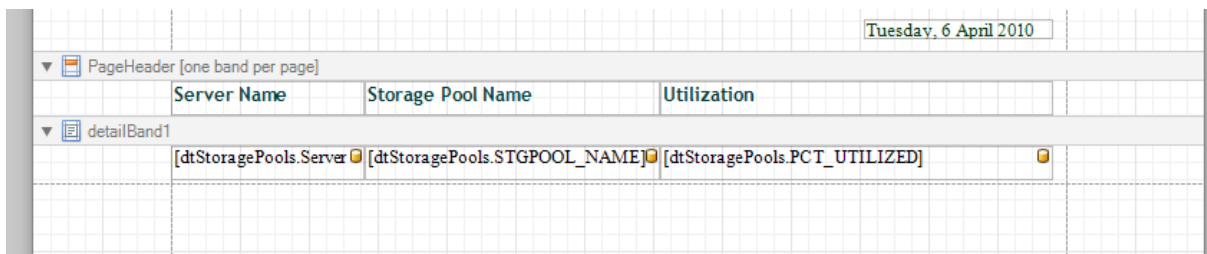


Next Step is to add the Fields to the Detail Pane, A Detail Pane is created by default when opening the Report Designer. One Detail Pane will be created for every row in the Dataview, so if the Dataview has 10,000 rows then 10,000 Detail Panes will be displayed. The Report Designer will split the Detail Panes into pages based on the page size chosen.

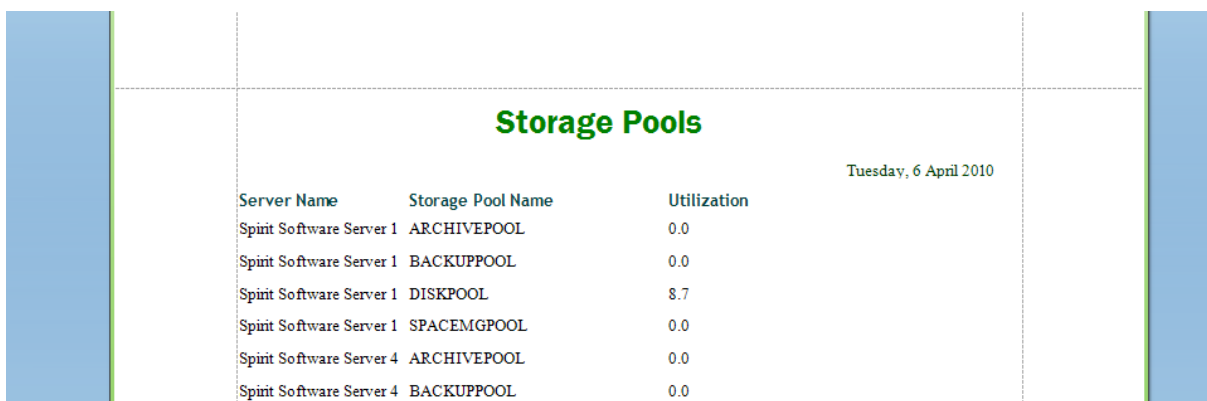
Drag the Server Name field onto the Detail Pane from the field list on the top right hand side of the Report Designer, also resize the Detail Pane so it is just large enough to display the field.



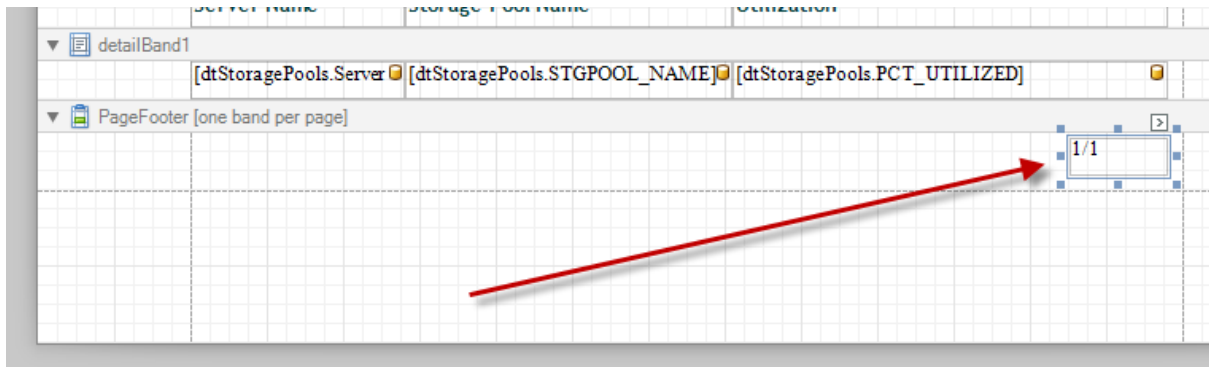
Do the same for the Storage Pool Name and Utilization



Now go to the Print Preview Tab and see what the report looks like.

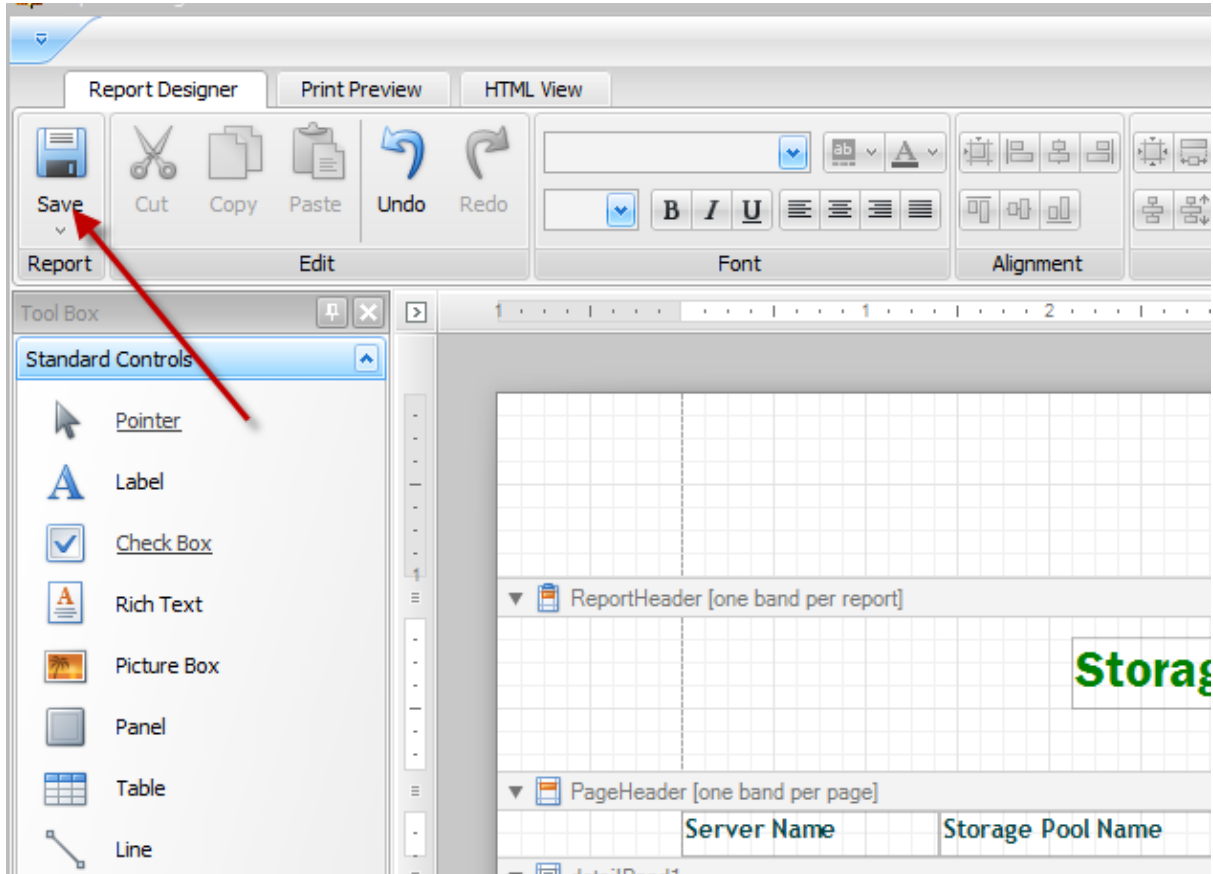


Now add a Page Footer Pane, a Page Footer Pane in displayed at the bottom of each page. Add a Page Info to the Page Footer Pane to display the current Page Number

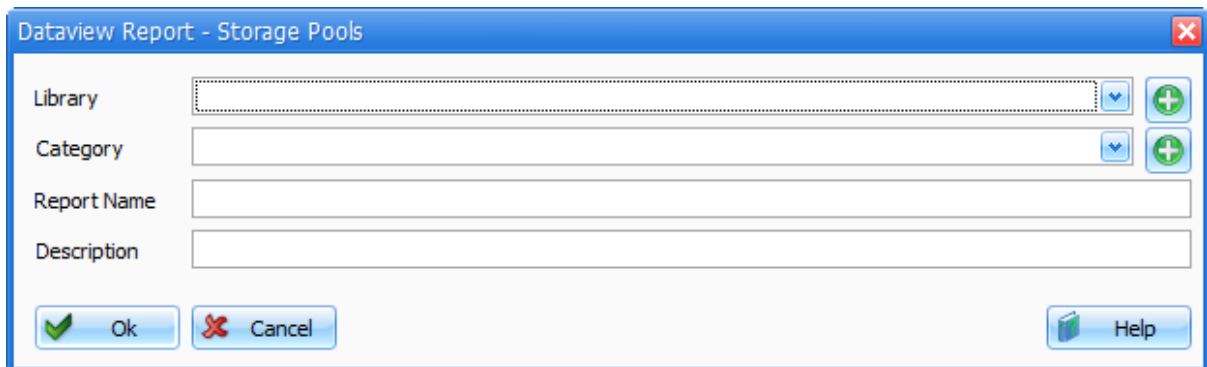



Saving the Report Template

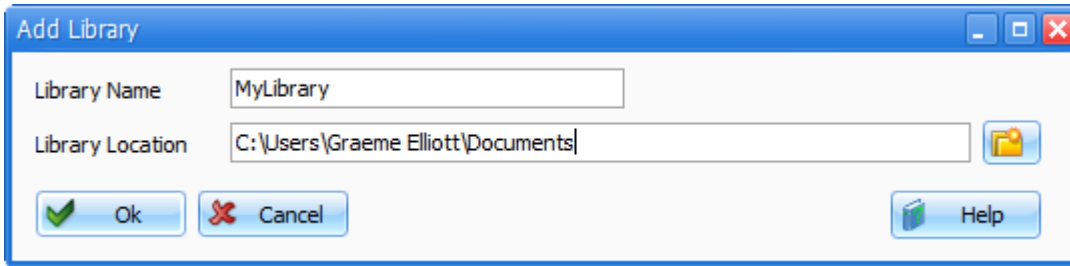
Choose the Save Icon on the Report Designer Tab



And the following Dialog will be displayed

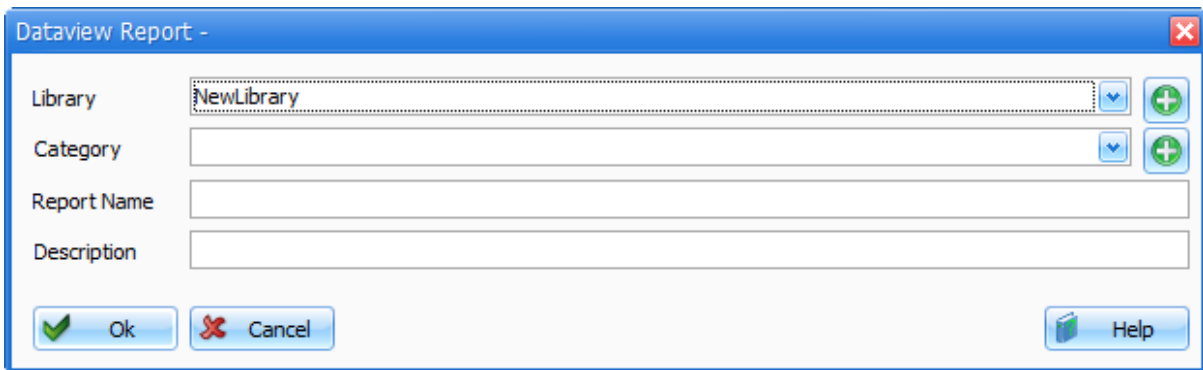


Report Templates are stored in a TSM Studio Library, if this is the first time you are using a TSM Studio Library then create a new library using the  Add Icon next to the Library Selection Box

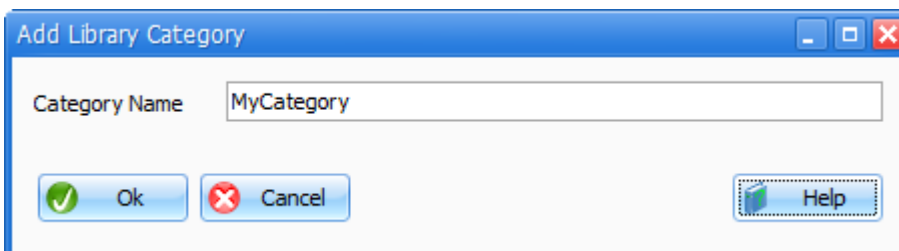


Choose a unique Name from the Library and a location for the Library. TSM Studio Libraries can be shared amongst other TSM Studio Users. Press Ok to Create the Library

Select the Newly Created Library




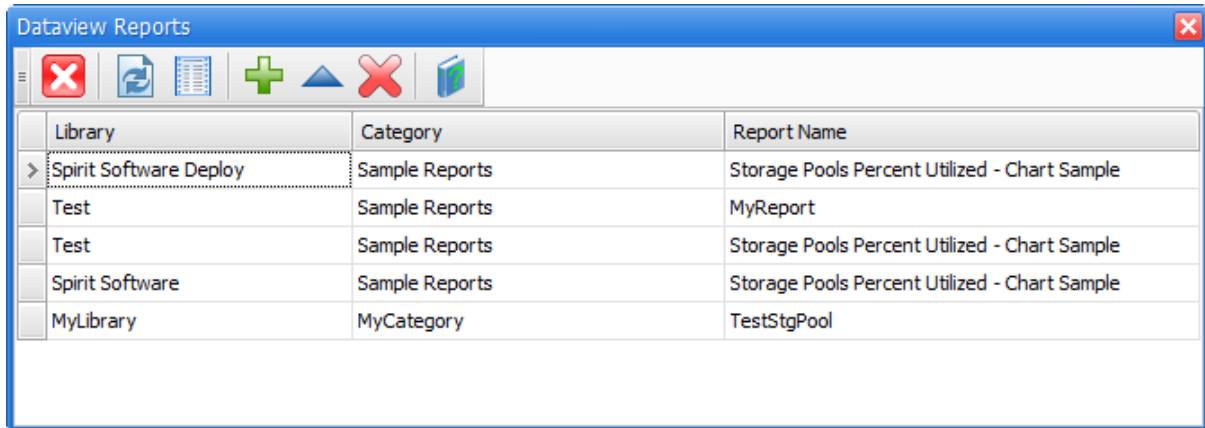
Select an existing Category or create a New Category under which this Report will be saved



Give the Report a Unique Name and Description and Press OK to save the Report Template

Accessing and Running Reports

Report Templates that have already been created for a Dataview can be accessed by opening the specific Dataview and selecting the  Reports Icon. This will display the following Reports Dialog which displays the list of available templates that can be run against this Dataview.



Library	Category	Report Name
> Spirit Software Deploy	Sample Reports	Storage Pools Percent Utilized - Chart Sample
Test	Sample Reports	MyReport
Test	Sample Reports	Storage Pools Percent Utilized - Chart Sample
Spirit Software	Sample Reports	Storage Pools Percent Utilized - Chart Sample
MyLibrary	MyCategory	TestStgPool



Run the Report Template using the data in the Current Dataview



Start the Report Designer



Edit the selected Report Template



Delete the selected Report Template