



# TSM Studio Operational Reporting Installation

---

## Table of Contents

Disclaimer .....	3
What is TSM Studio Operational Reporting? .....	4
System Requirements.....	5
Database Requirements .....	6
Installing TSM Admin Client .....	7
Installing TSM Studio Operational Server .....	11
TSM Studio Operational Reporting Configuration.....	16
Starting TSM Studio Operational Reporting .....	17
Enable Firewall Port .....	18
Connecting to TSM Studio Operational Reporting Service for the first time.....	21
Creating the Operational Reporting Server Connection .....	22
Change the Default Admin password.....	25
Allowing Access to Active Directory Groups.....	26

## Disclaimer

Direct, incidental, consequential, indirect, or punitive damages arising out of your access to, or use of, the site and articles within. Without limiting the foregoing, everything on the site is provided to you 'AS IS' WITHOUT WARRANTY OF ANY KIND, EITHER EXPRESSED OR IMPLIED, INCLUDING, BUT NOT LIMITED TO, THE IMPLIED WARRANTIES OF MERCHANTABILITY, FITNESS FOR A PARTICULAR PURPOSE, OR NON INFRINGEMENT.

"Please note that some jurisdictions may not allow the exclusion of implied warranties, so some of the above exclusions may not apply to you. Check your local laws for any restrictions or limitations regarding the exclusion of implied warranties."

## What is TSM Studio Operational Reporting?

TSM Studio Operational Reporting provides an easy way to run a set of pre-packaged reports to view the status on the most important aspects of your TSM Server. TSM Studio Operational Reporting includes.

- **Archive, Backup, Restore and Retrieve Reporting**
- **Virtual Environment Backup Reporting**
- **Database and Log Utilization and Capacity**
- **Storage Pool Utilization**
- **Administration Schedules and Status**
- **Custom Summary section**
- **Add User defined SQL to the Custom Summary**
- **Activity Log Errors**
- **Migration, Expiration and Replication Statistics**
- **Full Missed File Details**
- **DRM Status**
- **Tape Drive Usage**
- **Process and Session Load**
- **TSM Storage Used**
- **Volume Status**

TSM Studio Operational Reporting tightly integrates with Windows security to provide a robust and secure environment for managing the TSM Servers in your environment.

## System Requirements

**TSM Studio Operational Reporting** is designed and has been tested on Windows 2008 and Windows 2012 (R2 versions also supported) 64 bit versions only. The amount of memory required will depend on the functionality used, the report generation feature will require a lot of memory for the generation of images and pdf's. We recommend a minimum of 8GB. 2x Processors\Cores is also recommended.

- Windows 2008\2012 ( 64 bit only)
- 8GB Memory
- Dual Core
- Virtual Environments Supported
- Dotnet Framework Version 4.5.1 (Including in TSM Studio Server installation package)
- TSM Administration Client 6.3 and above ( This is included in the TSM Client Install Package see instruction below on how to install )
- **NOTE: The TSM Admin client is not installed by default when installing the TSM Client Package, see the section on installing the TSM Client to ensure the admin client is installed**

**TSM Studio Operational Reporting Client** is designed and has been tested on Windows 7, Windows 8, Windows 2008 and Windows 2012 (R2 versions also supported).

- Windows 7,8,2008,2012
- 2GB Memory
- Virtual Environments Supported
- Dotnet Framework Version 4.5 (Including in TSM Studio Server installation package)

## Database Requirements

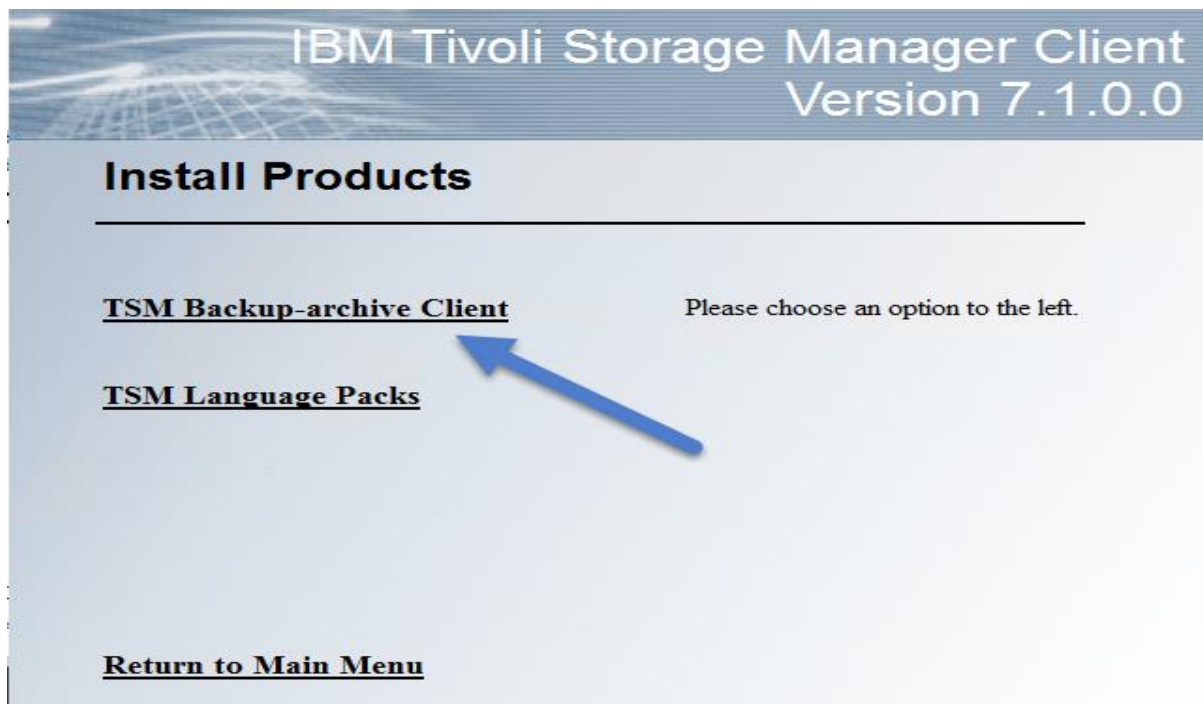
TSM Studio Operational Reporting uses Microsoft SQL Express which is included in the installation package. The installation will also configure the database connection so no further steps are required.

## Installing TSM Admin Client

Start the TSM Client install setup program and Choose Install Products



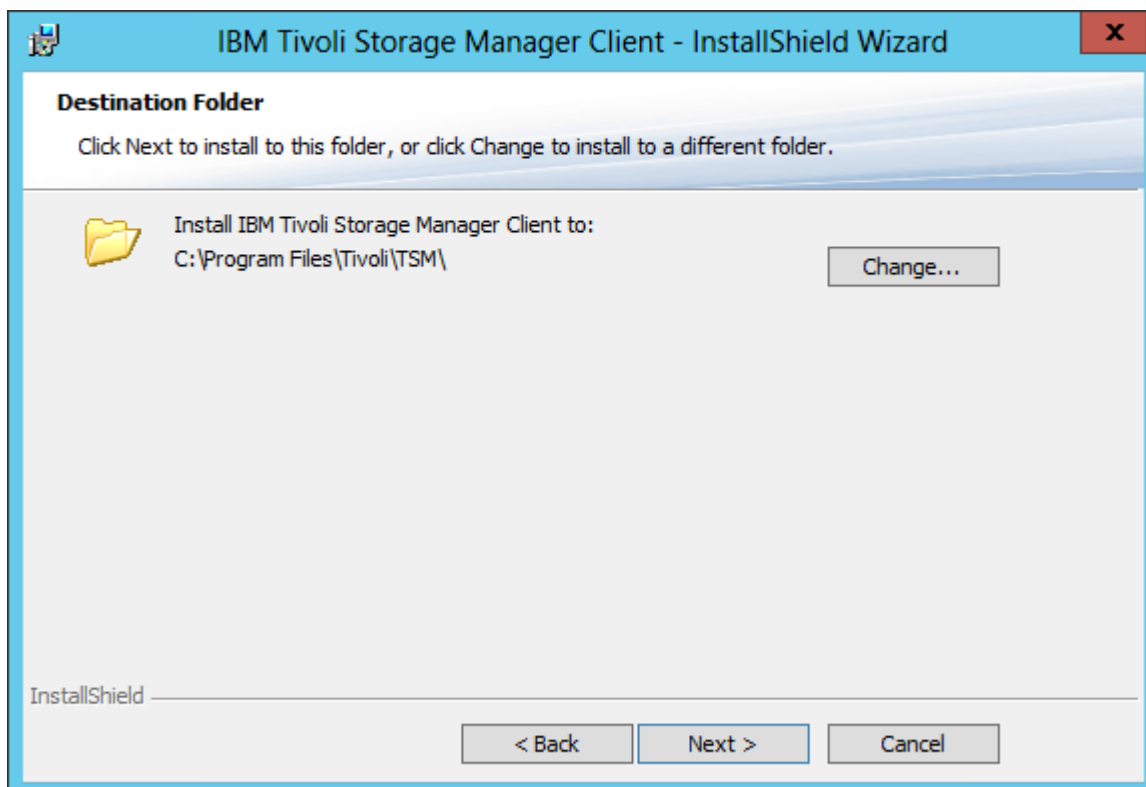
Choose TSM Backup-archive Client



Click Next

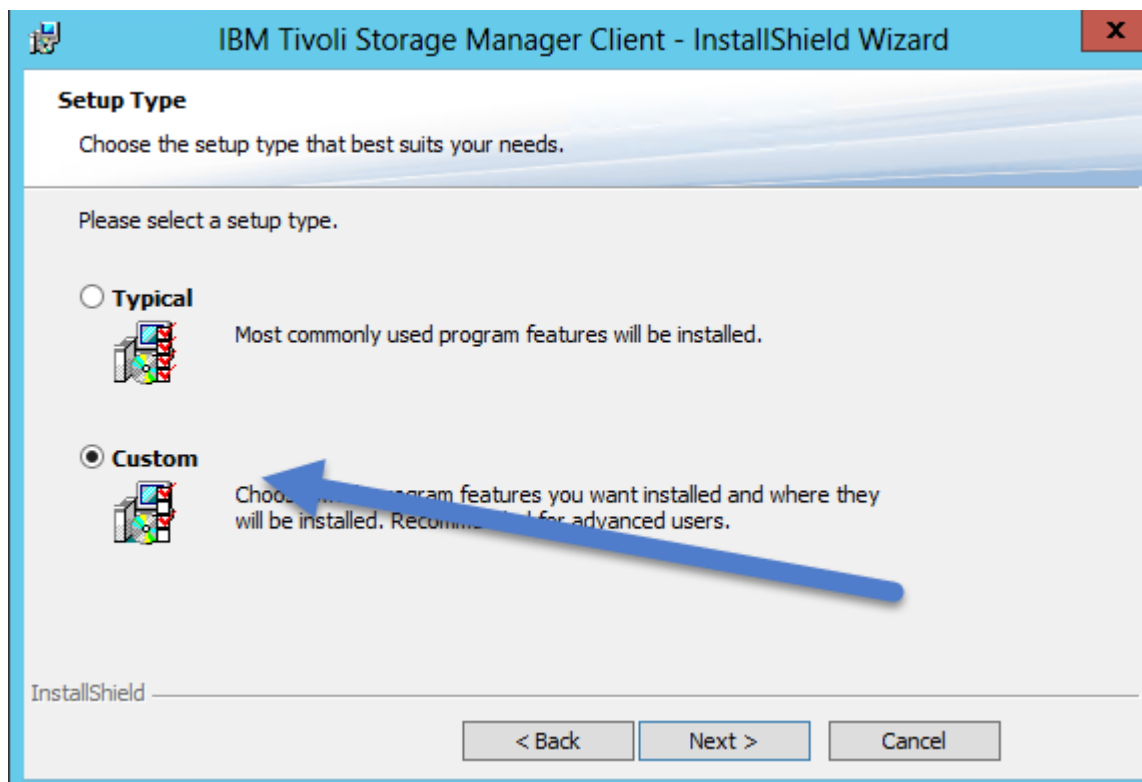


Choose install directory and Press Next



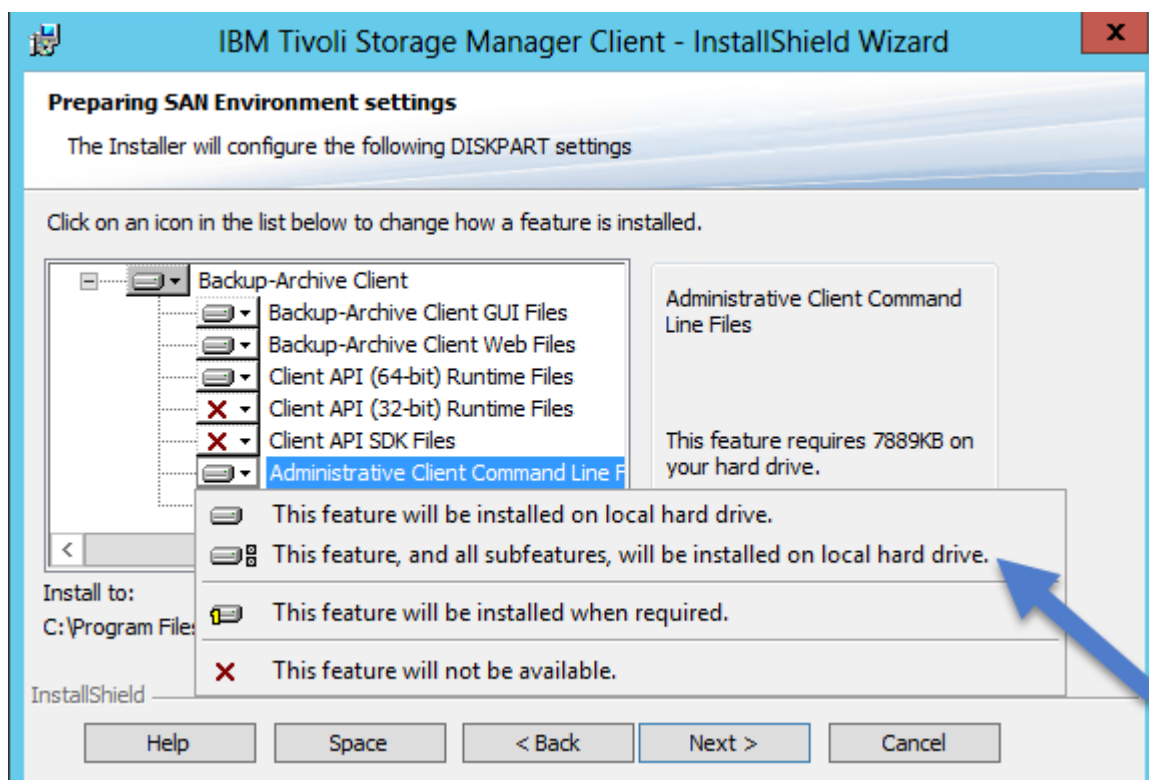


## IMPORTANT CHOOSE CUSTOM AND PRESS NEXT

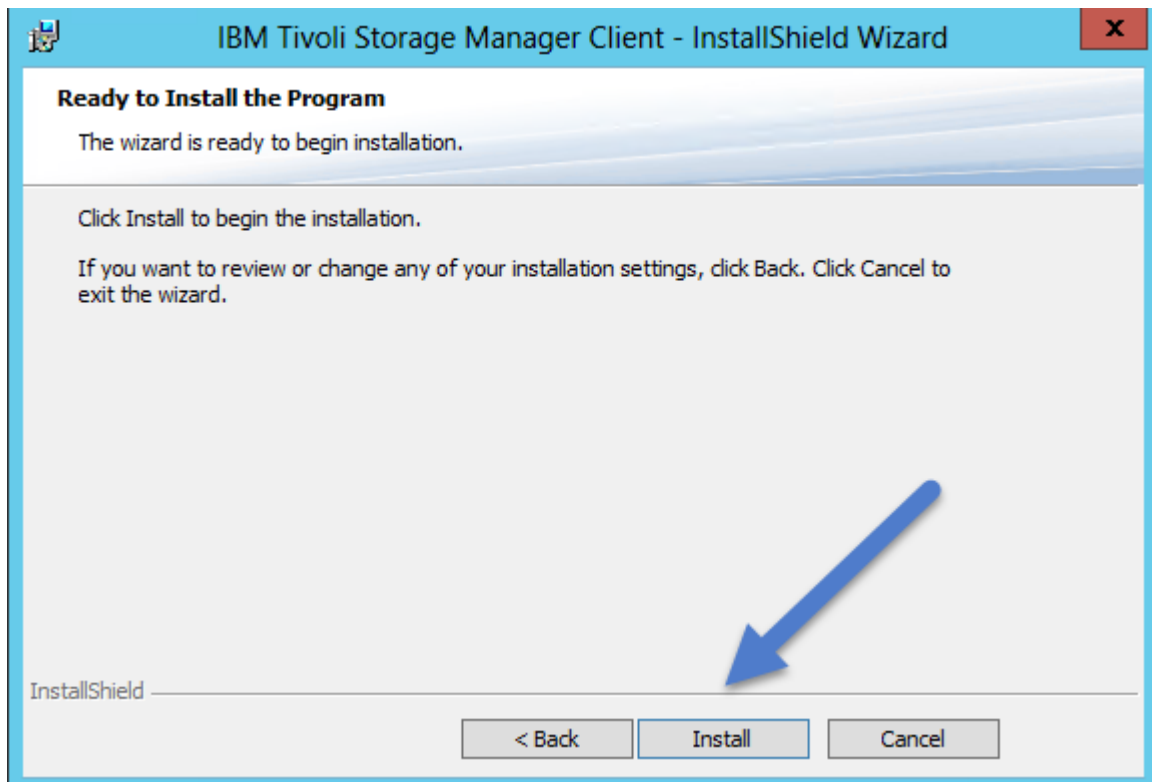


Click on **Administrative Client Command Line Files** and Choose *This Feature, and all subfeatures, will be installed on the local hard drive.*

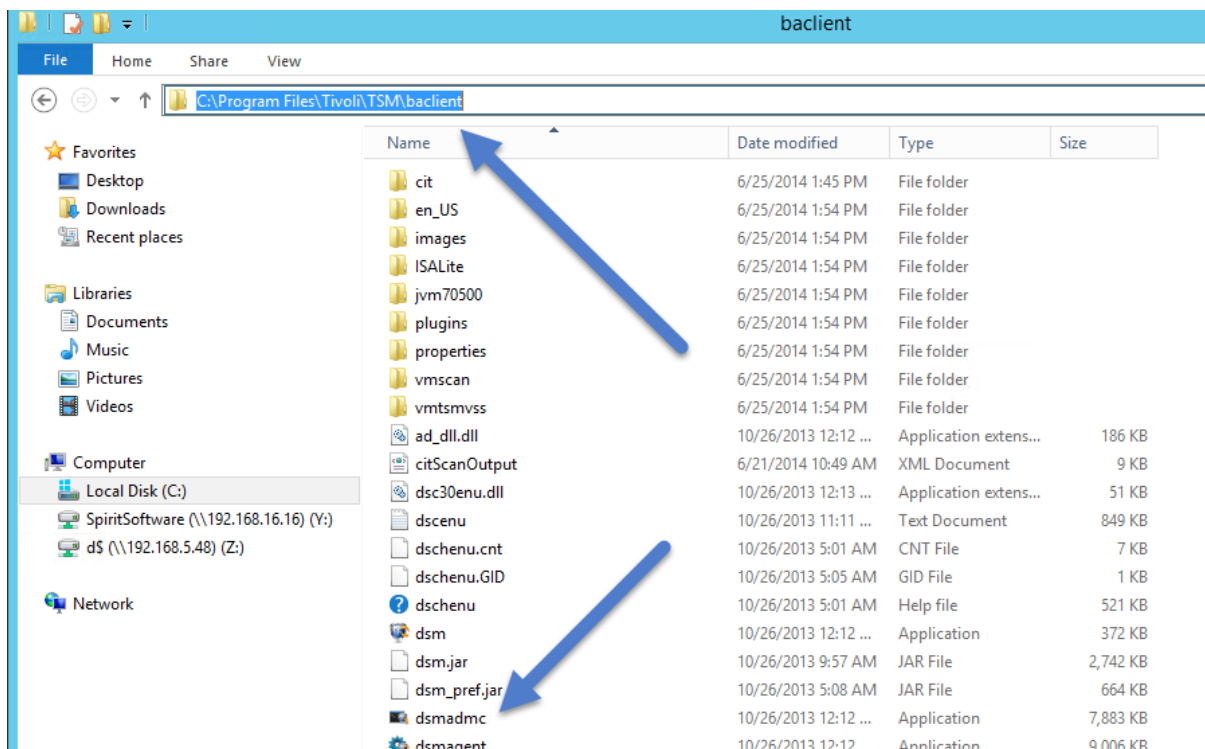
Press Next



Press Install



Verify. Check that the executable dsmadmc.exe has been installed it can be found in the installation directory (by default C:\Program Files) in Tivoli\TSM\baclient



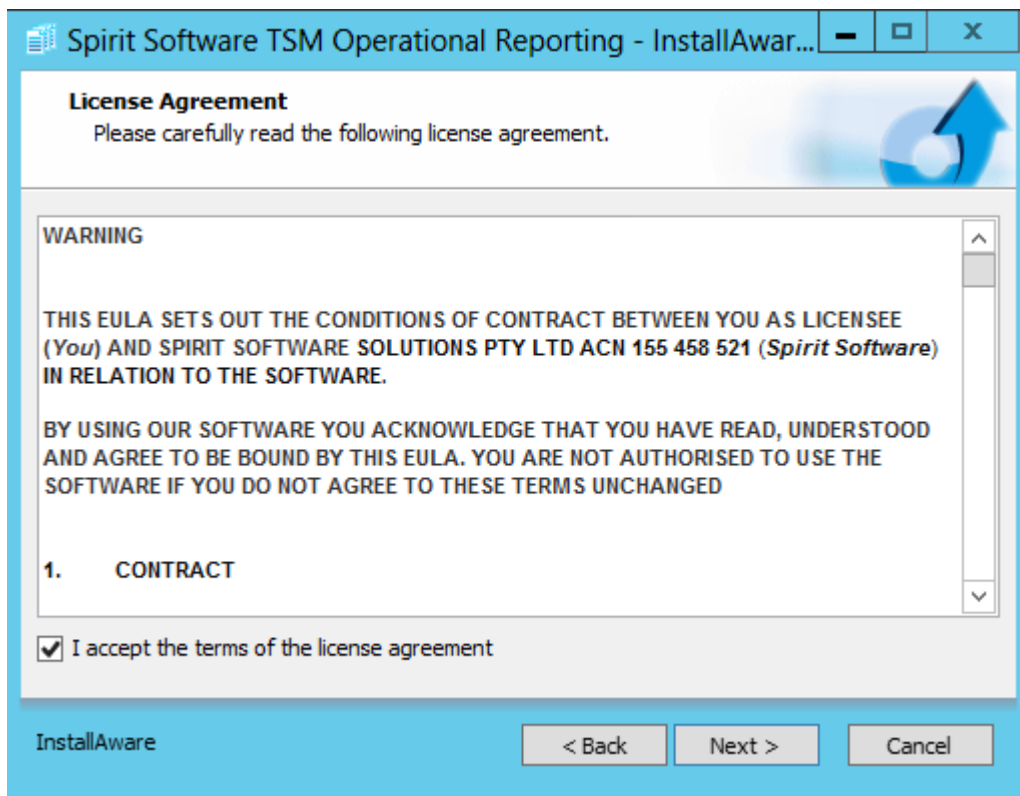
## Installing TSM Studio Operational Server

1. Download the installation package from <http://www.spiritsoftware.biz>.
2. Run the Installation Package

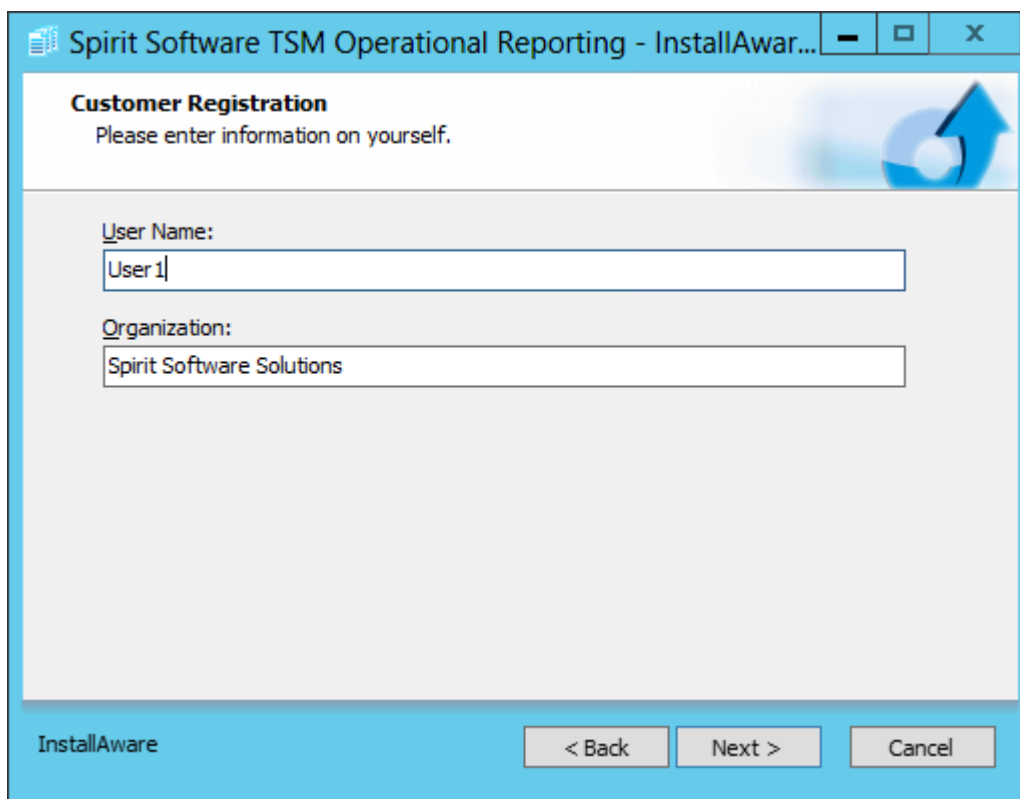
If the Dotnet Framework is not installed then the installer will install it.



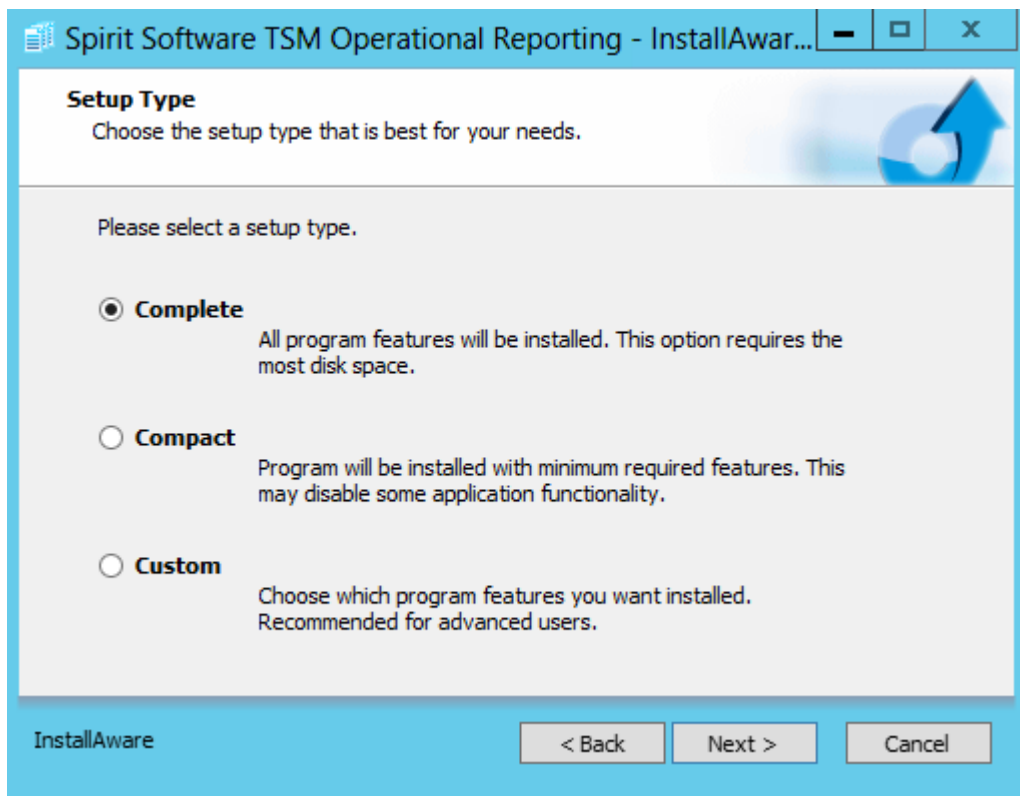
Press Next



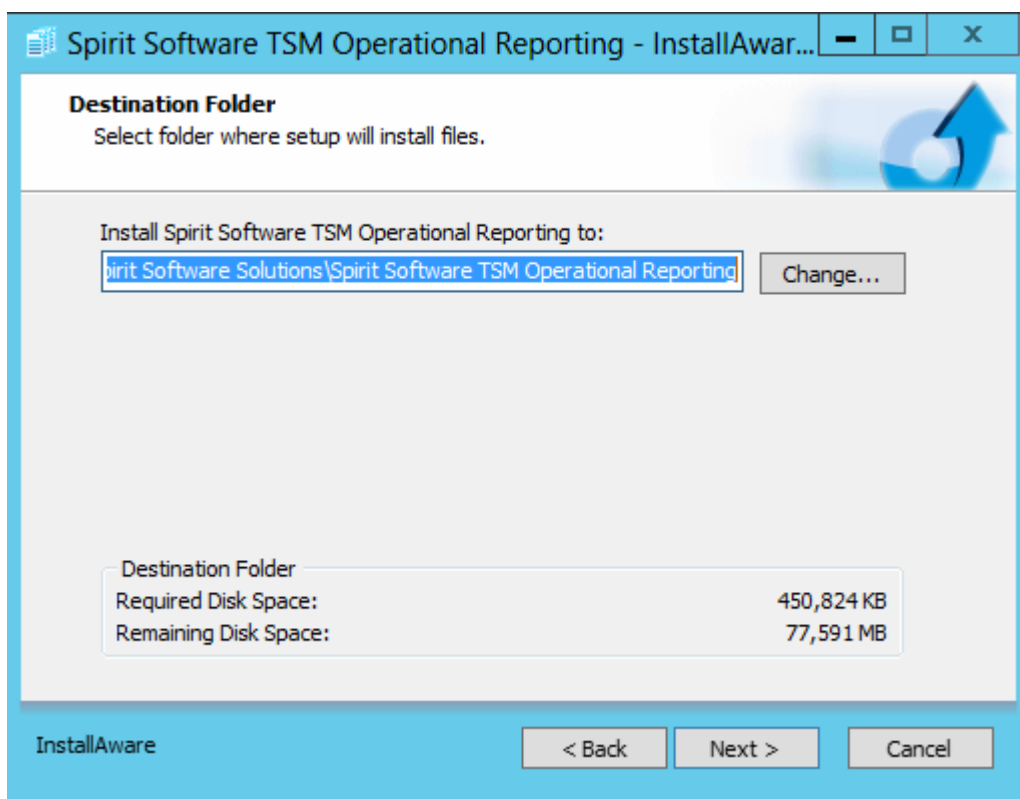
Accept the agreement and press Next



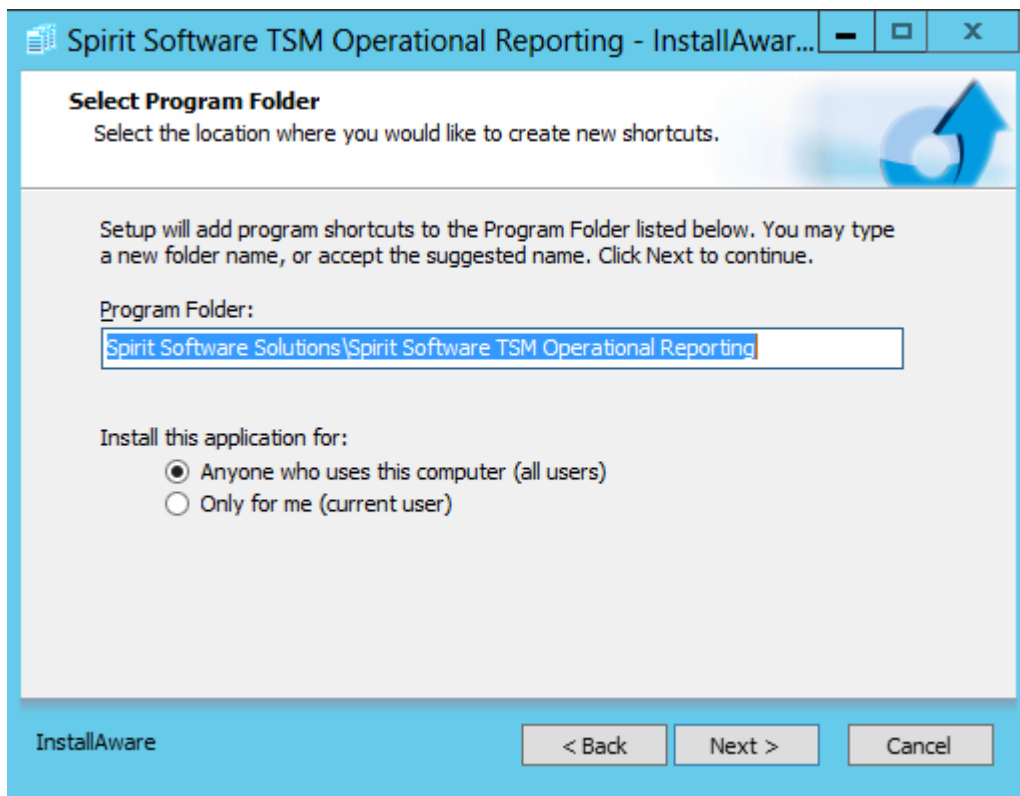
Enter the registration details and press Next



Select the installation type and press Next



Choose the installation Folder and press Next

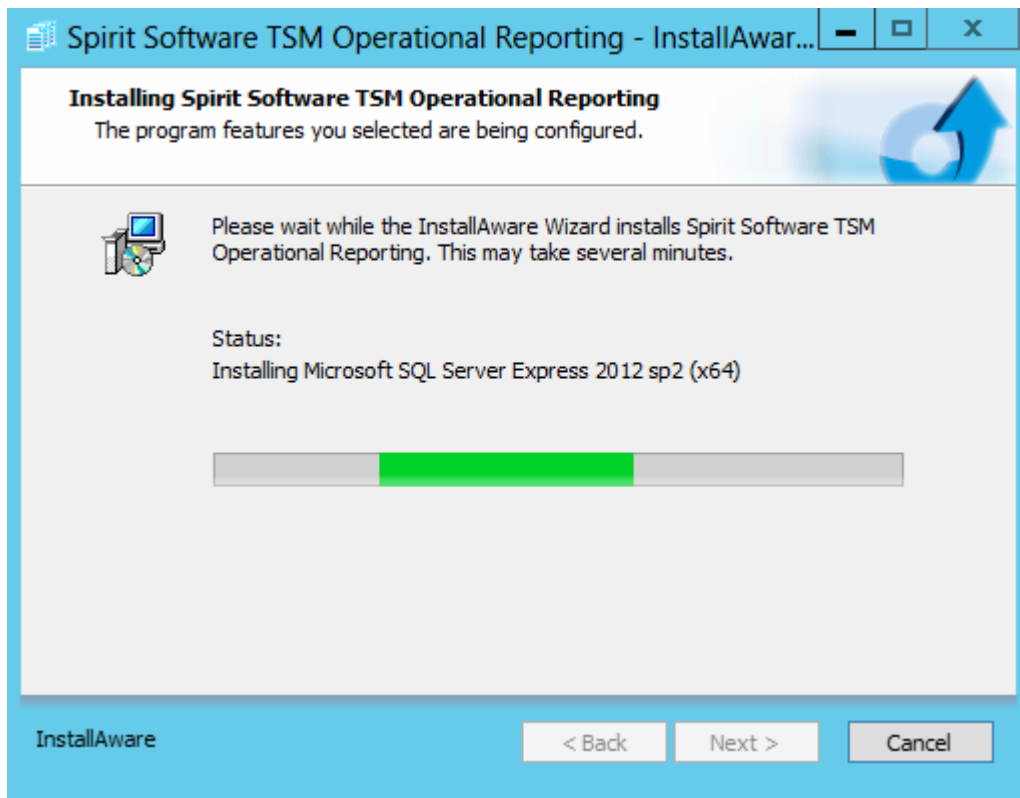


Choose the Program Folder where the shortcuts will be displayed and press Next



Press Next and the install will start

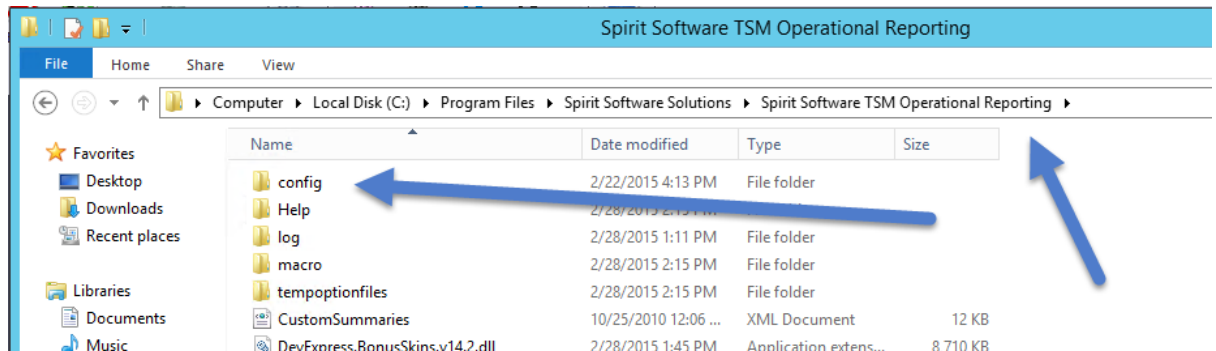
SQL Server will be installed if not already on the system



Select Finish.

## TSM Studio Operational Reporting Configuration

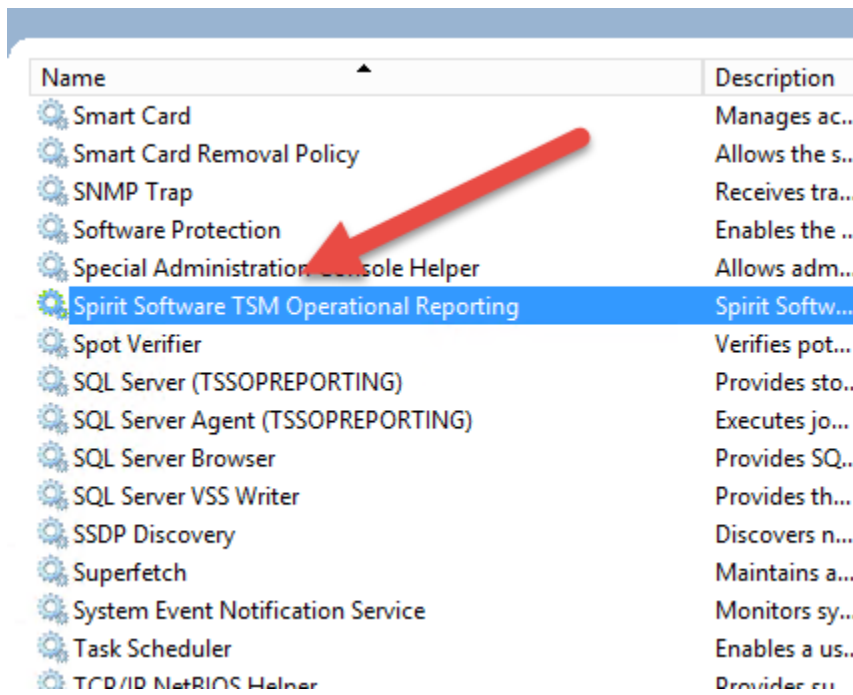
The Configuration file for TSM Studio Operational Reporting can be found in the installation path in the config directory. This can be manually modified if you wish to a different database server or different communications port. See the TSM Studio Operational Reporting User Guide for more information.





## Starting TSM Studio Operational Reporting

The installer will automatically start the TSM Studio Operational Reporting service as seen here.



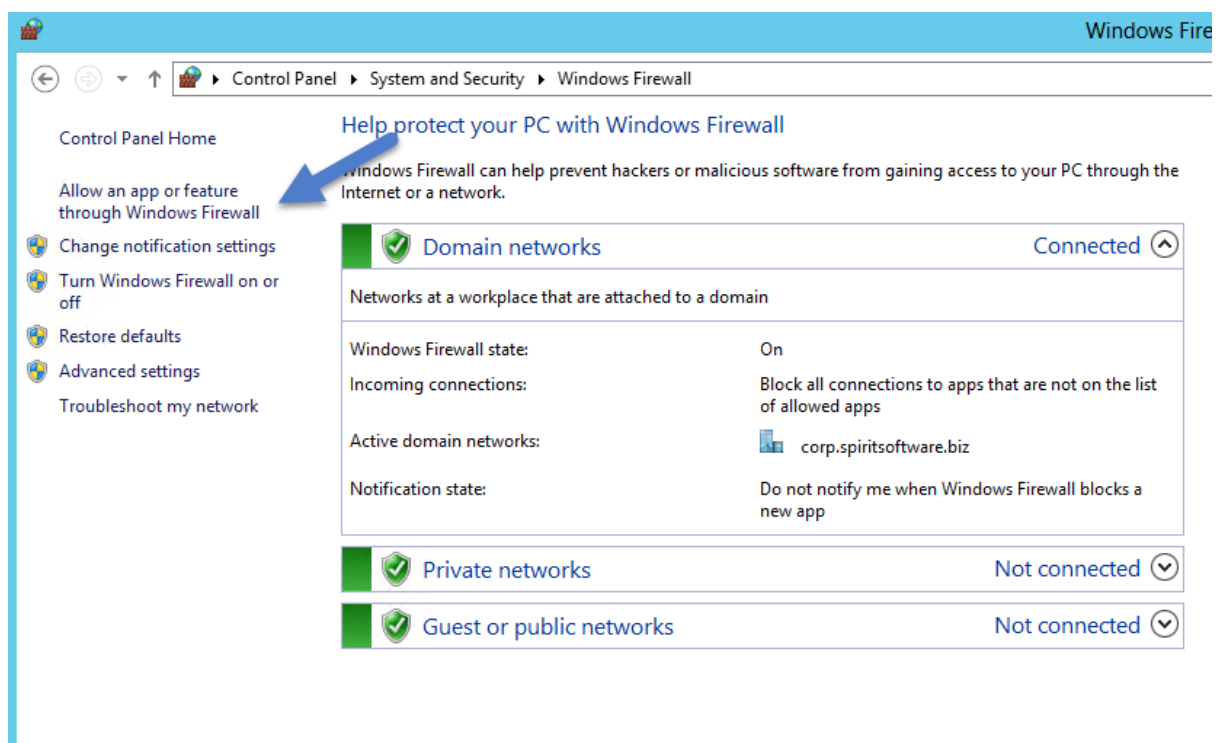
A screenshot of the Windows Services console. The 'Name' column lists various services, and the 'Description' column provides brief details. The service 'Spirit Software TSM Operational Reporting' is highlighted in blue. A red arrow points to this service from the left.

Name	Description
Smart Card	Manages ac...
Smart Card Removal Policy	Allows the s...
SNMP Trap	Receives tra...
Software Protection	Enables the ..
Special Administration Console Helper	Allows adm...
<b>Spirit Software TSM Operational Reporting</b>	Spirit Softw...
Spot Verifier	Verifies pot...
SQL Server (TSSOPREPORTING)	Provides sto...
SQL Server Agent (TSSOPREPORTING)	Executes jo...
SQL Server Browser	Provides SQ..
SQL Server VSS Writer	Provides th...
SSDP Discovery	Discovers n...
Superfetch	Maintains a...
System Event Notification Service	Monitors sy...
Task Scheduler	Enables a us..
TCP/IP NetBIOS Helper	Provides cu...

## Enable Firewall Port

If you plan on install the TSM Studio Operational Reporting Client or Operational Reporting Viewer on a different server or desktop then it may be necessary to setup the windows firewall on the system running TSM Studio Operational Reporting to allow access.

Go into Windows Firewall settings and select Allow an app or feature through Windows Firewall

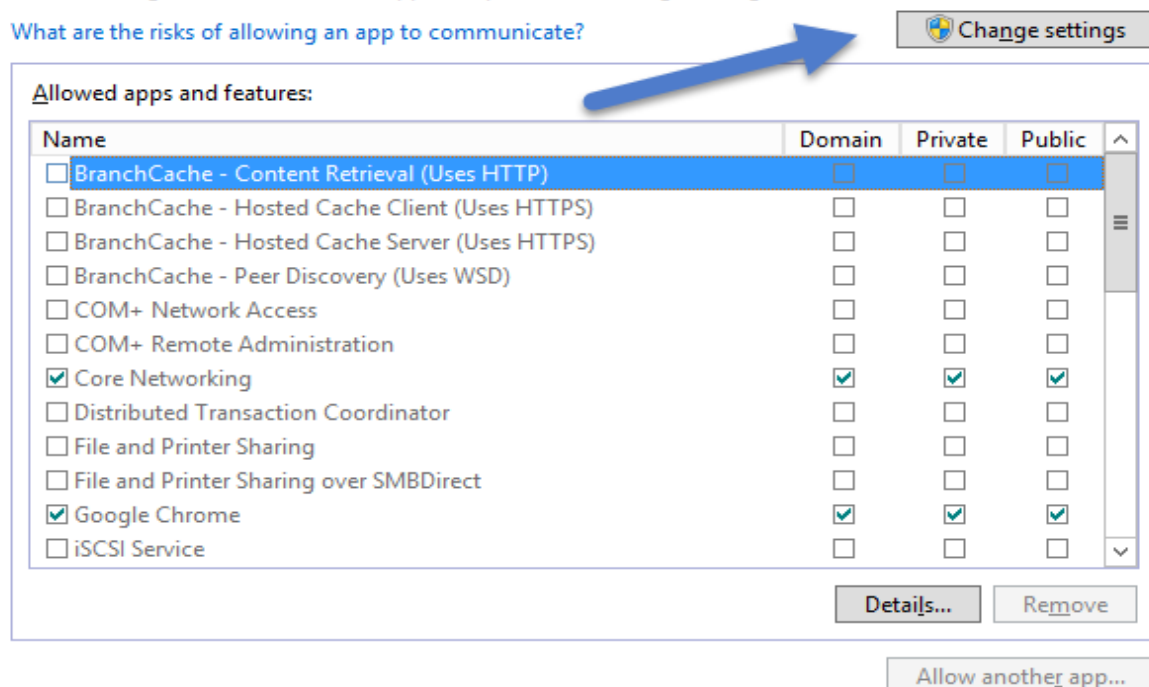


Press the Change Settings button

### Allow apps to communicate through Windows Firewall

To add, change, or remove allowed apps and ports, click Change settings.

[What are the risks of allowing an app to communicate?](#)

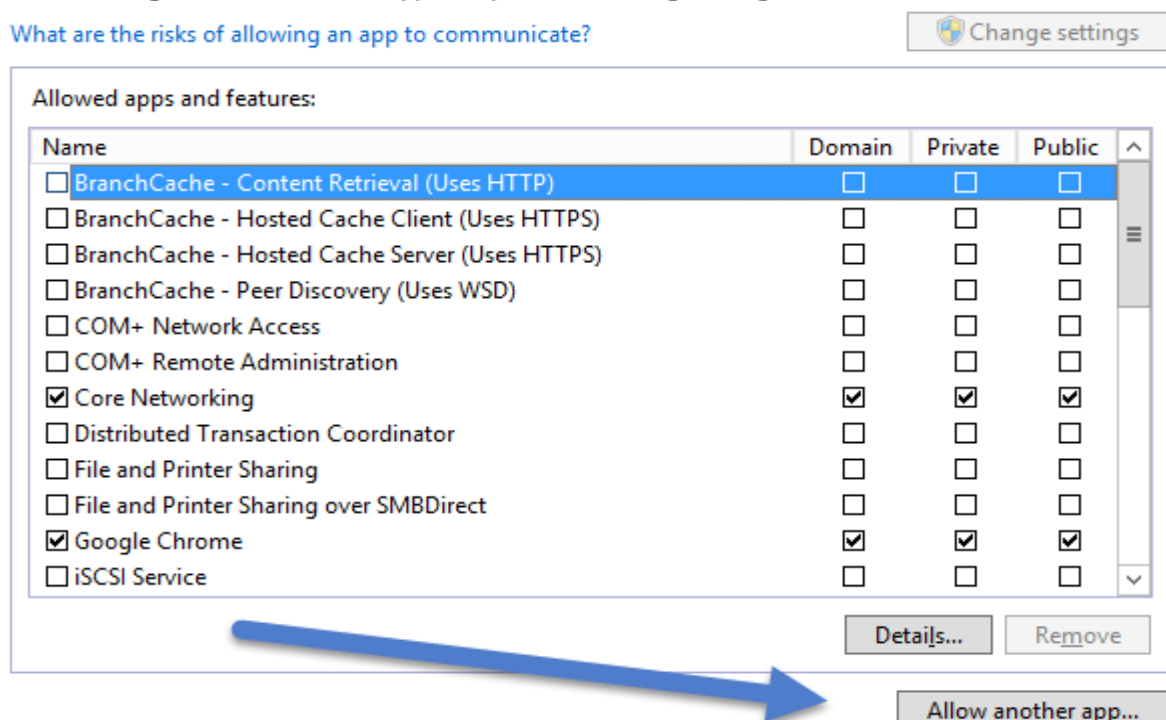


Then Press the Allow another App.. button

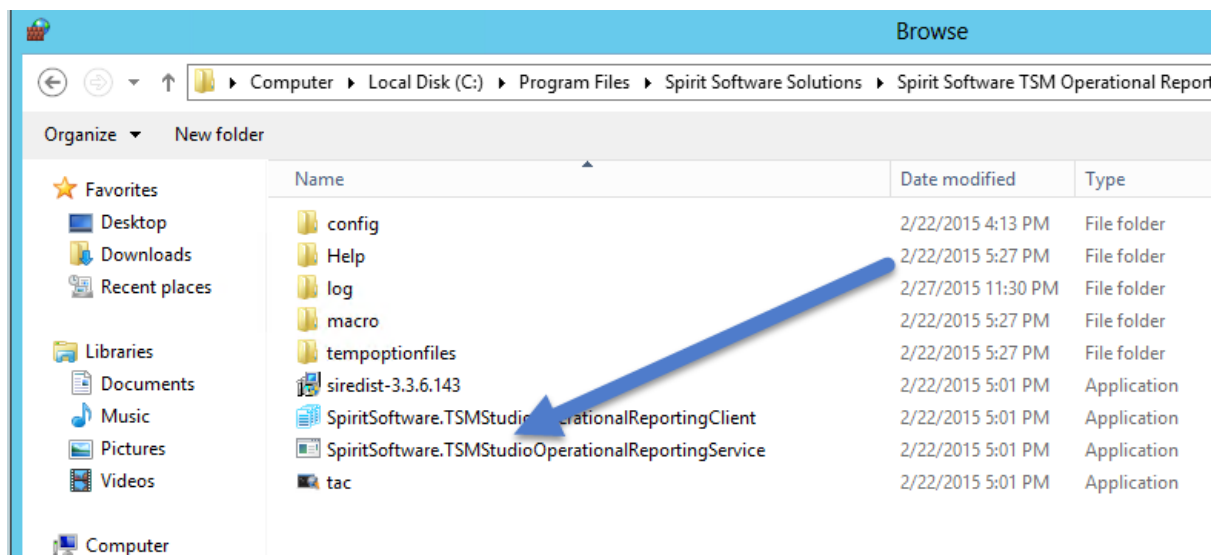
### Allow apps to communicate through Windows Firewall

To add, change, or remove allowed apps and ports, click Change settings.

[What are the risks of allowing an app to communicate?](#)



## Choose the TSM Studio Operational Reporting Service Application



## Connecting to TSM Studio Operational Reporting Service for the first time

By default the TSM Studio Operational Reporting Client will also be installed on the same server as TSM Studio Operational Reporting Server and it can be installed remotely as required.

The TSM Studio Operational Reporting Client shortcut can be found in a number of places depending on the Operating System. For Windows 2008 it will appear in the program files folder, and for 2012 it will appear in the Task Bar and Start Page. The shortcut will be named ***TSM Studio Operational Reporting***

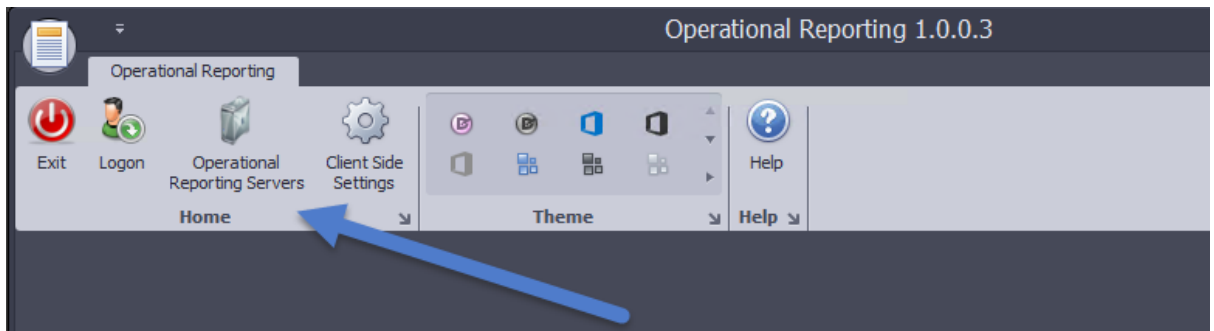
***Client*** and the icon is as follows



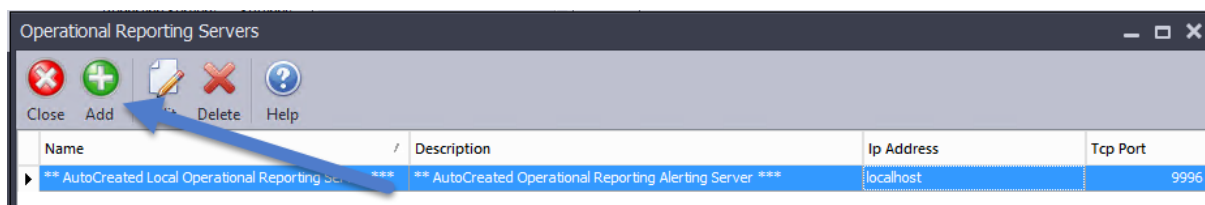
By default a definition will be created on first start that will allow connection of the client to the TSM Studio Operational Reporting Server when both are running on the same server.

## Creating the Operational Reporting Server Connection

After starting the TSM Studio Operational Reporting Client. Click the Operational Reporting Servers icon to add a definition for a TSM Studio Operational Reporting Server



Click the Add Button

The screenshot shows the 'Operational Reporting Servers' dialog box. It has fields for 'Name', 'Description', 'IP Address', and 'Port'. The 'Name' field contains '\*\* AutoCreated Local Operational Reporting Server \*\*\*', the 'Description' field contains '\*\* AutoCreated Operational Reporting Alerting Server \*\*\*', the 'IP Address' field contains 'localhost', and the 'Port' field contains '9996'. There are 'Ok', 'Cancel', and 'Help' buttons at the bottom.

**Name:** Enter any name to identify the TSM Studio Operational Reporting Server

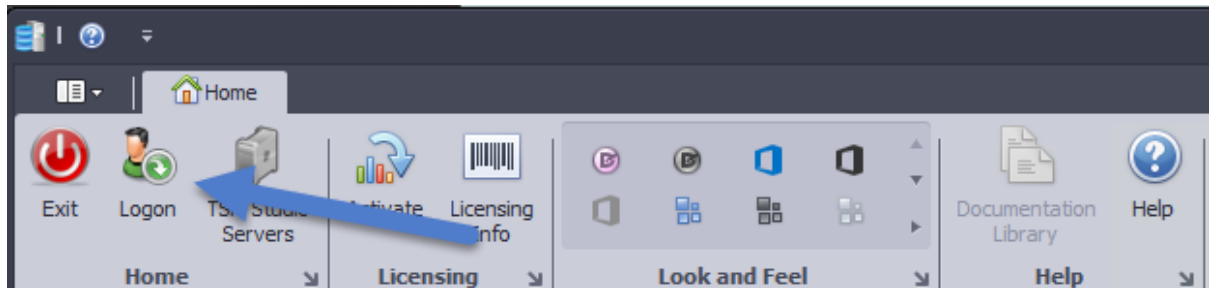
**Description:** Enter an optional description

**IP Address:** Enter the IP address or the FQDN of the TSM Studio Operational Reporting Server

**Port:** Enter the same number that was used for the admin port definition in the TSM Studio Server Setup (default is 9996)

Press ok to save the changes.

Close the TSM Studio Operational Reporting dialog and press Logon from the main screen

A screenshot of the 'Operational Report Server Logon' dialog box. It has a dark background. The title bar says 'Operational Report Server Logon'. Inside, there are four input fields: 'Operational Report Server' (a dropdown menu showing '\*\* AutoCreated Local Operational Reporting Server \*\*'), 'Userid' (containing 'admin'), 'Password' (containing '\*\*\*\*\*'), and 'Domain' (empty). Below these is a checkbox labeled 'Save Logon Details' which is checked. At the bottom, there are three buttons: 'Ok' (with a green checkmark icon), 'Cancel' (with a red X icon), and 'Help' (with a question mark icon).

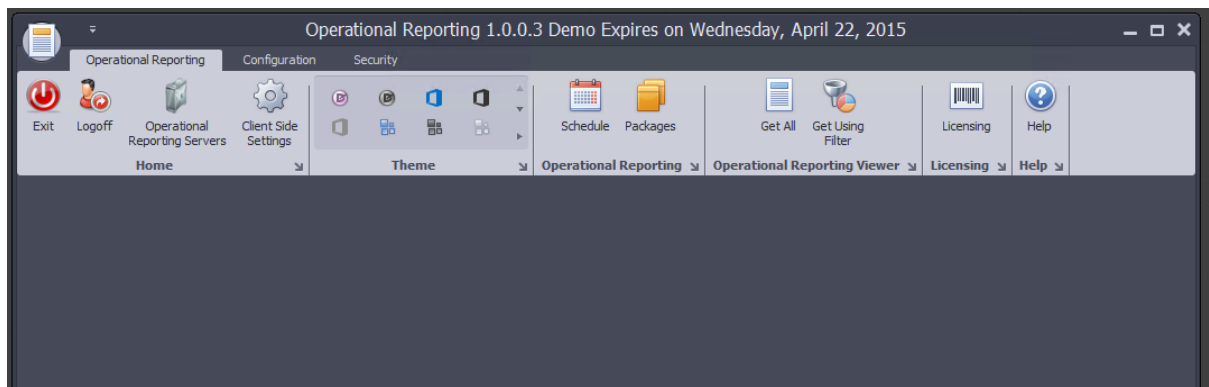
Operational Report Server: Select the TSM Studio Operational Reporting Server previously defined

Userid: enter the userid (default is admin)

Password: enter the password (default is password)

Press Ok.

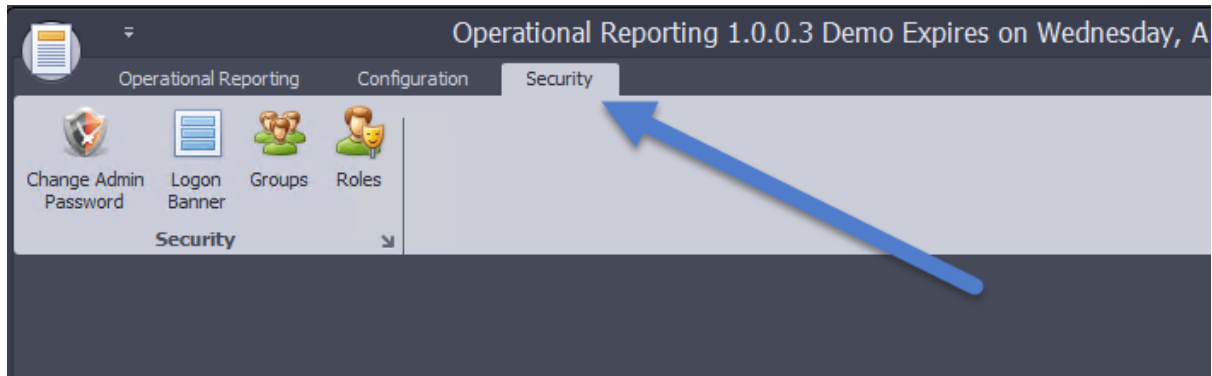
After logging on the following will be shown





## Change the Default Admin password

It is recommended that the default admin password be changed after first logon. To do this go to the **Security Tab**



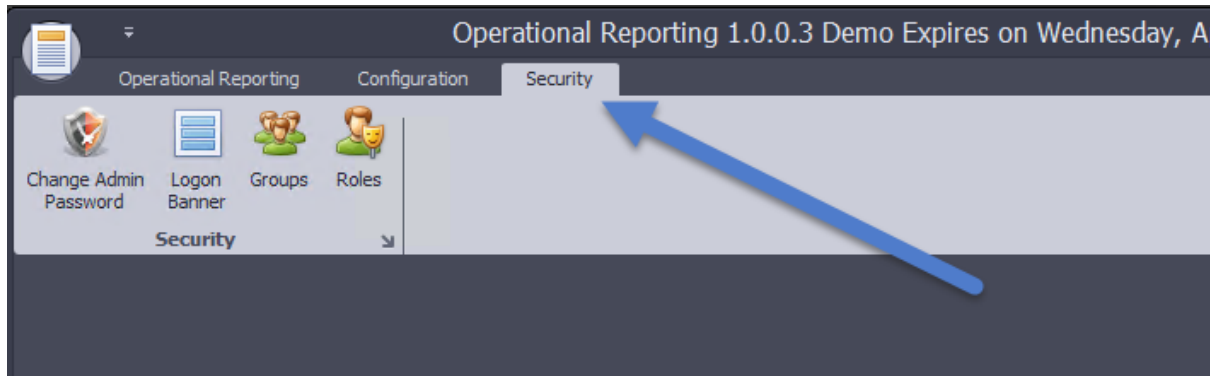
And select **Change Admin Password**

A screenshot of the 'Change Admin Password' dialog box. It features two input fields: 'Password' and 'Verify Password'. Below these fields are two buttons: 'Ok' (with a green checkmark icon) and 'Cancel' (with a red X icon).

Enter the new password and press Ok

## Allowing Access to Active Directory Groups

To setup security to allow users to use their Active Directory Id's. Go to the **Security Tab**



Select Groups



Select the Admin Group and press Edit (or double click the Admin Group to edit). Add the Active Directory group to the Windows Group section and press ok.

Security Groups

Name

Description

Roles

Windows Groups

- TSMStudioAdmins
- Administrators
- Domain Admins

☒ Ok ☐ Cancel